



PORTLAND CHAPTER

May 2012

Headline Article

Next Chapter Meeting

- Chapter Meeting Sponsor
- Keynote Presentation
- Educational Presentation
- Chapter Meeting Logistics

Professional Development

- Project Risk Management
- Book Reviewers Wanted
- Roeder Online Courses
- Fall PMP/CAPM Prep Course
- Bubba Watson & Project Risk

Chapter News & Events

- Event Calendar
- Roundtable Meetings
- Vote Now!
- Position Descriptions
- Candidate Profiles
- Ballot
- 2012 Annual Conference

PM News Briefs

Membership

- Join PMI Portland Chapter
- Become a Volunteer!
- PM Job Postings
- Welcome New Volunteers
- Member News
- Photos

Articles

- PMI at the 2012 MS Project Conference

PMI

- President's Letter
- Newsletter Director's Letter
- About PMI Portland

www.pmi-portland.org



PMI Portland Connection

May 2012

There Must be 50 Ways to Earn PDUs...

The title of this article paraphrases the Paul Simon's song, "50 Ways to Leave your Lover," and was adjusted to relate to Project Managers with PMI certification. I selected this headline to catch the reader's attention. I am not sure if I can gather up "50 Ways", but let's see how close I can get.

Earn PDUs Locally

1. Go to a PMI Portland sponsored Roundtable. You earn 1 PDU for each roundtable you attend. Go to www.pmi-portland.org/roundtables for more information.
2. Become a Roundtable facilitator. Contact the Director of Roundtables at roundtable@pmi-portland.org for more information.
3. Write an article for the Newsletter. You can earn up to 3 PDUs for each article, if it is included in the newsletter. Submit it to newsletter_dir@pmi-portland.org.
4. Write a Book Review for the Newsletter. You can earn 1-3 PDUs for each article, if it is included in the newsletter. Submit it to newsletter_dir@pmi-portland.org
5. Become a volunteer for the PMI Portland Chapter. There are many volunteer opportunities. Go to www.pmi-portland.org/volunteer-opportunities for more information.
6. Become part of the Leadership team of the PMI Portland Chapter. Nominations are over for this year, but you can start preparing to run for office next year.



7. Volunteer to help on one of the Committees of the PMI Portland Chapter.
8. Present at a Roundtable, Monthly Chapter meeting, or Monthly Educational presentation. Contact the VP of Programs at vp_programs@pmi-portland.org.
9. Teach for the PMP/CAPM preparation courses offered by the PMI Portland Chapter. Contact the Director of Certification at certification@pmi-portland.org if you are interested.
10. Become a mentor. PMI Portland Chapter offers the opportunity to be a mentor to those who wish to learn more about project management. Go to www.pmi-portland.org/mentoring-program for more information.
11. Participate in free webinars. There are several project management or project management related companies that offer free webinars that offer PDUs. Two of these companies are Roeder Consulting and Oracle.
12. Attend one of the monthly Educational Presentation and/or the monthly Chapter meeting. Each one earns you 1 PDU.
13. Attend one of the workshops offered through the PMI Portland Chapter. Go to www.pmi-portland.org/workshops for more information
14. Discover other Professional Development resources that are available through PMI Portland Chapter. Go to www.pmi-portland.org/professional-development-calendar for more information.

continued...



PORTLAND CHAPTER

May 2012

Headline Article

Next Chapter Meeting

- Chapter Meeting Sponsor
- Keynote Presentation
- Educational Presentation
- Chapter Meeting Logistics

Professional Development

- Project Risk Management
- Book Reviewers Wanted
- Roeder Online Courses
- Fall PMP/CAPM Prep Course
- Bubba Watson & Project Risk

Chapter News & Events

- Event Calendar
- Roundtable Meetings
- Vote Now!
- Position Descriptions
- Candidate Profiles
- Ballot
- 2012 Annual Conference

PM News Briefs

Membership

- Join PMI Portland Chapter
- Become a Volunteer!
- PM Job Postings
- Welcome New Volunteers
- Member News
- Photos

Articles

- PMI at the 2012 MS Project Conference

PMI

- President's Letter
- Newsletter Director's Letter
- About PMI Portland

www.pmi-portland.org

May 15 Chapter Meeting

Chapter Meeting Sponsor

PCC CLIMB Center for Advancement– Professional Development and Training

CLIMB = Continuous Learning for Individuals, Management and Business

Backed by the vast resources of Portland Community College, the CLIMB Center for Advancement is the one source training partner of the Project Management community. CLIMB, the entrepreneurial arm of the college, serves the training needs of your organizations' project managers, team members, stakeholders, sponsors and executives—providing all levels with accelerated, specialized professional development.

Your project management expertise coupled with our customized training solutions makes a winning combination to ensure the success of your projects and your organization. The team at CLIMB Professional Development and Training is proud to be your project management partner.
www.pcc.edu/CLIMB/training

Keynote Presentation

How to Handle Emotionally Charged Situations, with Christine Richards

[Read more...](#)

Educational Presentation

Speaking for Leadership, with David Angel, PMP

[Read more...](#)

Expand Your Project Management Tool Kit



Did you know that PMI Career Framework (PathPro®) identifies 107 different skills we should have in our tool kit as project managers, program managers, and portfolio managers?

The Professional Development and Training team at the CLIMB Center is ready to help expand your tool kit with customized training solutions—just right for you!

The CLIMB team is proud to be your project management partner.

www.pcc.edu/climb/training
professional.training@pcc.edu
971-722-6686

CLIMB Center for Advancement
Continuous Learning for Individuals, Management & Business





PORTLAND CHAPTER

May 2012

Headline Article

Next Chapter Meeting

- Chapter Meeting Sponsor
- Keynote Presentation
- Educational Presentation
- Chapter Meeting Logistics

Professional Development

- Project Risk Management
- Book Reviewers Wanted
- Roeder Online Courses
- Fall PMP/CAPM Prep Course
- Bubba Watson & Project Risk

Chapter News & Events

- Event Calendar
- Roundtable Meetings
- Vote Now!
- Position Descriptions
- Candidate Profiles
- Ballot
- 2012 Annual Conference

PM News Briefs

Membership

- Join PMI Portland Chapter
- Become a Volunteer!
- PM Job Postings
- Welcome New Volunteers
- Member News
- Photos

Articles

- PMI at the 2012 MS Project Conference

PMI

- President's Letter
- Newsletter Director's Letter
- About PMI Portland

www.pmi-portland.org

To continue the list, here is what the National Project Management Institute lists on how to earn PDUs.

Continue Your Education

15. Registered Education Provider (R.E.P.) Courses : There are more than 1,100 PMI R.E.P.s worldwide who offer courses that are pre-approved for PDUs.

16. E-Learning : PMI's e-Learning offerings allow you to increase your understanding of project management and apply real-world knowledge through simulations at your own pace. These include our eSeminarsWorldSM courses and our Publication Quizzes.

17. PMI Community Offerings : Our chapters and communities of practice hold events, meetings, webinars and educational sessions. PMI members can join these communities and take advantage of their offerings.

18. PMI® Global Congresses and Regional Events : Attend a congress or regional event and learn, network and get inspired.

19. SeminarsWorld® : Held throughout the year, SeminarsWorld events provide in-depth coverage of a single topic for beginning, mid-level and experienced project professionals.

20. Self-Directed Learning: PMI will recognize activities that involve personally conducted research or study, including discussions or coaching sessions with colleagues or clients. Such activities should make use of informational materials like CD-ROMs, articles, books, videos or instructional manuals.

21. Educational Programs by Outside Providers: PMI recognizes relevant educational activities or programs offered by organizations not registered with PMI.

Give Back to the Profession

22. Creating new content. Write project management-related books and articles for professional print or electronic publications, including PMI's numerous publications or our Knowledge Shelf. If you're web savvy, write a blog for your company or organization, or present a podcast or webinar. Check out PMI's Voices on Project Management blog. A team of volunteers along with PMI staff reviews the articles before

posting them. Your paper could be a part of this virtual collection and earn you 15 PDUs under Category 2B if you are its sole author.

23. Volunteer Service: Earn PDUs for providing your professional services to an organization or group outside of your employer; this includes any elected offices you hold for a project management organization. PMI also has many volunteer opportunities.

24. Doing Your Job: When you practice project (project scheduling, risk, or program) management professionally, you can claim PDUs. If you work every day as a project manager, this counts toward credential maintenance.

And here is one more...

25. PMI Publication Quizzes: Allow you to earn PDUs from the comfort and convenience of your personal computer. When you purchase a quiz bundle from PMI.org, you receive PMI-published articles and white papers with accompanying quizzes that test your knowledge. If you obtain a quiz score of 70% or higher you will earn between one and two PDUs per quiz in Category 3. PMP credential holders can earn a maximum of 20 PDUs per certification cycle using Publication Quizzes.

Five Pointers for Retaining Your PMP Certification

Earning 60 PDUs over three years is manageable, especially if you map out a plan for when and how you will attain your PDUs. From taking an e-learning course to getting involved in PMI Chapter and community activities, there are many ways to gain these valuable PDUs. Typically, you will earn one PDU for every hour (60 minutes) spent on an acceptable professional development activity.

The Project Management Institute provides these five tips for maintaining your PMP credential:

continued...



PORTLAND CHAPTER

May 2012

Headline Article

Next Chapter Meeting

- Chapter Meeting Sponsor
- Keynote Presentation
- Educational Presentation
- Chapter Meeting Logistics

Professional Development

- Project Risk Management
- Book Reviewers Wanted
- Roeder Online Courses
- Fall PMP/CAPM Prep Course
- Bubba Watson & Project Risk

Chapter News & Events

- Event Calendar
- Roundtable Meetings
- Vote Now!
- Position Descriptions
- Candidate Profiles
- Ballot
- 2012 Annual Conference

PM News Briefs

Membership

- Join PMI Portland Chapter
- Become a Volunteer!
- PM Job Postings
- Welcome New Volunteers
- Member News
- Photos

Articles

- PMI at the 2012 MS Project Conference

PMI

- President's Letter
- Newsletter Director's Letter
- About PMI Portland

www.pmi-portland.org

1. Start early. Establish a strategy for attaining your PDUs before your cycle begins.
2. Maintain a personal folder for all your PMP PDU claims documentation. This information will be valuable if your reporting form is randomly selected for audit.
3. Report activities soon after completion. This makes it easier to complete the Activity Reporting Form.
4. Take advantage of the opportunity to transfer PDUs from one cycle to the next. If you are a PMP credential holder, you can transfer up to 20 PDUs earned in the last year of your current cycle.
5. Make sure you have the registered program number for R.E.P. classes, which is required on the Activity Reporting Form.

Remember, all activities must be related to project management topics that are substantially consistent with the knowledge areas and processes outlined in the latest edition of *A Guide to the Project Management Body of Knowledge (PMBOK®Guide)* and involve appropriate expert resources.

I could list more ways by listing specific webinars, seminars, etc, but because of space, I will stop here. 25 out of 50 isn't bad, so...

Make a New Plan, Stan, and Earn Some PDUs!

Laura Sakaguchi
Newsletter Director, PMI Portland Chapter

Your Professional Edge in Project Management

DeVry University's Keller Graduate School of Management has the right PMmix to add more power to your career. Our targeted project management degree programs are about balance, flexibility, and individual achievement.



No matter what your goals are, there's a PMmix option for you—

- MPM – Master's Degree in Project Management
- MBA – Master's Degree in Business Administration with a concentration in Project Management
- GCPM – Graduate Certificate in Project Management

Plus, we offer professional training solutions that can be tailored to meet specific career interests and goals. Classes are offered evenings and weekends with the flexibility of attending onsite, online, or through a combination of both.



Learn more...

Call us at 503.296.7468

Visit our website today at Keller.edu/Portland



Portland Campus | 9755 SW Barnes Rd., Ste. 150 | Portland, OR 97225

Program availability varies by location. ©2009 DeVry University. All rights reserved.



PORTLAND CHAPTER

May 2012

Headline Article

Next Chapter Meeting

- Chapter Meeting Sponsor
- **Keynote Presentation**
- Educational Presentation
- Chapter Meeting Logistics

Professional Development

- Project Risk Management
- Book Reviewers Wanted
- Roeder Online Courses
- Fall PMP/CAPM Prep Course
- Bubba Watson & Project Risk

Chapter News & Events

- Event Calendar
- Roundtable Meetings
- Vote Now!
- Position Descriptions
- Candidate Profiles
- Ballot
- 2012 Annual Conference

PM News Briefs

Membership

- Join PMI Portland Chapter
- Become a Volunteer!
- PM Job Postings
- Welcome New Volunteers
- Member News
- Photos

Articles

- PMI at the 2012 MS Project Conference

PMI

- President's Letter
- Newsletter Director's Letter
- About PMI Portland

www.pmi-portland.org

May 15 Chapter Meeting

Keynote Presentation

How to Handle Emotionally Charged Situations

When projects don't go according to plan, the true test of excellent people skills for project managers is how to handle the 'problem' customer—both internal and external. "The customer is always right" is hard to remember when you're facing unfair criticism, an emotional outburst or verbal abuse...and its directed right at you!

How to Handle Emotionally Charged Situations...we give you the all-important skills you need to handle difficult people effectively, efficiently and easily.

Participants will . . .

- Discover why complaints are really opportunities
- Explore what anger is and what role it plays in solving problems
- Understand what people really want from you when they are upset
- Learn how to stay calm and collected when someone lashes out at you
- Develop confidence in your ability to work with difficult people

With this program you can expect to understand why people become angry and why it is not personal. You will learn an easy, four-step model to diffuse anger and gain confidence in your ability to handle most of the emotionally charged situations you will face every day.

Attend this entertaining and informative session to be ready for that next emotionally charged situation on your project!



About the Presenter

Christine Richards has conducted presentations for financial, manufacturing, business, educational and governmental groups. More than 33,000 people have benefited from hearing her speak on the topics of communication, customer service, sales and behavioral profiling.

Christine was educated in England and brings more than 24 years of

international experience in business, project management, sales and managing teams.

Project managers know that all projects involve process and people. Christine has worked extensively with project managers and teams to ensure that people issues don't impede the process.

Christine is the Director of the Professional Development and Training Department at CLIMB. CLIMB stands for Continuous Learning for Individuals, Managers, and Businesses and is the entrepreneurial part of Portland Community College.

She is also a first-degree black belt in Shotokan (Show-tow-can) Karate. She has competed in more than 20 tournaments and was a member of the Southern England Women's Karate Team.

Currently, Christine is a professional member of the National Speakers Association and past president for the Oregon Chapter. She is passionate about working with women and teen girls in the areas of bullying, self-esteem and self-defense.



PORTLAND CHAPTER

May 2012

Headline Article

Next Chapter Meeting

- Chapter Meeting Sponsor
- Keynote Presentation
- **Educational Presentation**
- Chapter Meeting Logistics

Professional Development

- Project Risk Management
- Book Reviewers Wanted
- Roeder Online Courses
- Fall PMP/CAPM Prep Course
- Bubba Watson & Project Risk

Chapter News & Events

- Event Calendar
- Roundtable Meetings
- Vote Now!
- Position Descriptions
- Candidate Profiles
- Ballot
- 2012 Annual Conference

PM News Briefs

Membership

- Join PMI Portland Chapter
- Become a Volunteer!
- PM Job Postings
- Welcome New Volunteers
- Member News
- Photos

Articles

- PMI at the 2012 MS Project Conference

PMI

- President's Letter
- Newsletter Director's Letter
- About PMI Portland

www.pmi-portland.org

May 15 Chapter Meeting

Educational Presentation

Speaking for Leadership

Organizational Leaders and Project Managers spend the vast majority of their time communicating. Mastering the skills of persuasive communication is essential for effective leadership. Twenty-five hundred years ago the foundations for effective communication were laid in Greece by Aristotle, framed in Rome by orators such as Cicero and beautifully ornamented with the speeches of Lincoln, Churchill and Martin Luther King Jr. While we may not have to lead our country from the brink of destruction or have to pull the blindfold off the face of justice (though it is there for a reason), we can all become more effective communicators by learning from their example.

This session will establish the value of a well honed rhetorical toolbox and introduce a framework to shore up your communications skills. The specific focus will be on speaking, but the concepts can be applied to other modes of communication.

About the Presenter



David Angel is an Engineer, Project Manager and owner of David Angel LLC, a company formed to deliver seminars and workshops to organizational leaders and Project Managers. David is a PMP with more than twenty years of project experience. After 10 years in the military, David earned a Bachelor's degree in Engineering, followed by a Master of Science in Engineering Management, and worked as a

designer and manufacturing engineer for the first half of his career and the last 15 working in IT.

In 2008 David began consulting as a Project Manager and Leadership Performance Coach. The highlight so far has been a consulting engagement with ConocoPhillips on the North Slope of Alaska in the Arctic Circle. David has taught college courses in Project Management and Computer Programming. He has been a member of Toastmasters International since 2006, serving one term as an Area Governor and three terms as a club President.

We Want to Profile Interesting Local Projects!

Have you recently closed on a project in the Portland area that other PMI Portland Chapter members might be interested in hearing about? We are looking for stories about local projects. You don't even need to do the writing. We will interview you and capture the fascinating details that describe your methods, approach, outcomes and lessons learned. Final copy will be published in the PMI Portland Chapter newsletter.

Please let us know you are interested by sending a short note to newsletter_dir@pmi-portland.org.



PORTLAND CHAPTER

May 2012

Headline Article

Next Chapter Meeting

- Chapter Meeting Sponsor
- Keynote Presentation
- Educational Presentation
- Chapter Meeting Logistics

Professional Development

- Project Risk Management
- Book Reviewers Wanted
- Roeder Online Courses
- Fall PMP/CAPM Prep Course
- Bubba Watson & Project Risk

Chapter News & Events

- Event Calendar
- Roundtable Meetings
- Vote Now!
- Position Descriptions
- Candidate Profiles
- Ballot
- 2012 Annual Conference

PM News Briefs

Membership

- Join PMI Portland Chapter
- Become a Volunteer!
- PM Job Postings
- Welcome New Volunteers
- Member News
- Photos

Articles

- PMI at the 2012 MS Project Conference

PMI

- President's Letter
- Newsletter Director's Letter
- About PMI Portland

www.pmi-portland.org

May 15 Chapter Meeting

Agenda

- 4:00 Registration table opens
- 4:30 Educational presentation
- 5:30 Networking
- 5:35 New member welcome meeting
- 6:30 Dinner and announcements
- 7:00 Keynote presentation

Meeting Pricing

PMI Portland Chapter Members*

- Keynote presentation with meal \$25
- Educational presentation \$10

PMI Portland Chapter Student Members*

- Keynote presentation with meal \$15
- Educational presentation \$5

Non-Members

- Keynote presentation with meal \$35
- Educational presentation \$10

Registration

At 10 a.m. the Monday before the Chapter meeting, the regular online registration price increases by \$10. At 4:00 p.m. the day of the meeting, regular registration price increases by \$20.

No refunds within 24 hours of the meeting. Contact registration@pmi-portland.org.

[Register Now](#)

* Chapter Members and Chapter Student Members are current members of PMI and the Portland Chapter. Student Membership is defined by PMI GOC, and does not apply to non-members who may be students.

[PMI Portland Chapter Student Outreach Process](#)

New Member Welcome Meeting

We meet directly after the Educational Presentation, in the same room. Join us to learn about who we are and what we offer, and to meet other new members.

Location

Doubletree Hotel—Lloyd Center
1000 NE Multnomah, Portland, Oregon 97232
(503) 281-6111

Free Parking

Menu

Chicken Marsala served over Garlic Mashed Potatoes with Fresh Vegetables

or

Vegetable Wellington served with Blended Wild Rice and Roasted Tomato Coulis

Carrot Spice Cake

Herzberg's Motivation-Hygiene Theory



PORTLAND CHAPTER

May 2012

Headline Article

Next Chapter Meeting

- Chapter Meeting Sponsor
- Keynote Presentation
- Educational Presentation
- Chapter Meeting Logistics

Professional Development

- **Project Risk Management**
- Book Reviewers Wanted
- Roeder Online Courses
- Fall PMP/CAPM Prep Course
- Bubba Watson & Project Risk

Chapter News & Events

- Event Calendar
- Roundtable Meetings
- Vote Now!
- Position Descriptions
- Candidate Profiles
- Ballot
- 2012 Annual Conference

PM News Briefs

Membership

- Join PMI Portland Chapter
- Become a Volunteer!
- PM Job Postings
- Welcome New Volunteers
- Member News
- Photos

Articles

- PMI at the 2012 MS Project Conference

PMI

- President's Letter
- Newsletter Director's Letter
- About PMI Portland

www.pmi-portland.org

Professional Development

Project Risk Management

Learn to Maintain Control, No Matter What!

Wednesday, June 20, 2012

The Cadence Risk Management course will help you develop the skills you need to identify risk and handle the crises that impact your projects, and your organization.

Managing risk is essential to project success. The occurrence of rework, errors, and injury can be reduced or eliminated when risk is identified, controlled, and responded to on a project. Risk assessment and management is a proactive way to improve the delivery of cost, schedule, and performance on your projects.

In fact, studies conducted by the Project Management Institute (PMI) quote a 90% decrease in project problems when risk management is used. Through risk management, the project manager gains control of the project, rather than having the project control the project manager.

Through exercises and class discussions, this workshop allows participants to practice key roles in the risk management process for projects. The focus of this seminar is to provide simple, practical approaches and techniques for managing risk—taking the complex and making it simple.

Key Learning Objectives

- Use templates and techniques for identifying and evaluating risk
- Determine people's profile for risk in your company or department
- Manage risk in project phases
- Assess impact and probability of risk
- Identify ways to avoid, mitigate, transfer, or accept risk
- Create contingency plans
- Determine responses to identified risks

Presenter



John Patton founded Cadence Management Corporation in 1983. From the outset, it was John's vision to be the premier provider of project management training, consulting services, and support tools.

John's leadership in the development and dissemination of state-of-the-art project management techniques has established him

as one of the industry's leading "change masters."

Appointed by PMI, John was the chair the OPM3 Certification Committee for 2006–2008. OPM3 is PMI's Organizational Project Management Maturity Model which identifies 488 best practices.

Workshop Details

Wednesday, June 20, 2012

8:30 a.m. to 5:00 p.m.

PDUs: 8

Location

World Trade Center
121 SW Salmon Street
Portland, OR 97204

Cost

PMI Portland Chapter Members *

- By 5/7/2012 5 pm: \$225
- 5/7 5 pm–5/28/2012 5 pm: \$250
- 5/28 5 pm–6/18/2012 5 pm: \$275

Non-Members

- By 5/7/2012 5 pm: \$325
- 5/7 5 pm–5/28/2012 5 pm: \$350
- 5/28 5 pm–6/18/2012 5 pm: \$375

** A current PMI Portland Chapter membership is required at the time of registration to take advantage of member pricing.*

Register today!



PORTLAND CHAPTER

May 2012

Headline Article

Next Chapter Meeting

- Chapter Meeting Sponsor
- Keynote Presentation
- Educational Presentation
- Chapter Meeting Logistics

Professional Development

- Project Risk Management
- **Book Reviewers Wanted**
- Roeder Online Courses
- Fall PMP/CAPM Prep Course
- Bubba Watson & Project Risk

Chapter News & Events

- Event Calendar
- Roundtable Meetings
- Vote Now!
- Position Descriptions
- Candidate Profiles
- Ballot
- 2012 Annual Conference

PM News Briefs

Membership

- Join PMI Portland Chapter
- Become a Volunteer!
- PM Job Postings
- Welcome New Volunteers
- Member News
- Photos

Articles

- PMI at the 2012 MS Project Conference

PMI

- President's Letter
- Newsletter Director's Letter
- About PMI Portland

www.pmi-portland.org

Professional Development

Book Reviewers Wanted

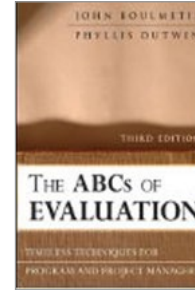
Would you like to write a book review and don't know which book to review? Here is a list of some suggested Project Management books. We welcome your input on any of these books, or select another! Send your review to newsletter_dir@pmi-portland.org.



100 Things Project Managers Should Do Before They Die, by Rita Mulcahy



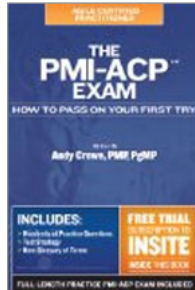
Scruppy Project Management: The 12 Predictable and Avoidable Pitfalls Every Project Faces, by Kimberly Wiefeling



The ABCs of Evaluation: Timeless Techniques for Program and Project Managers, by John Boulmetis, Phyllis Dutwin



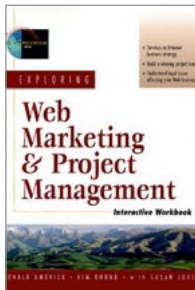
Making Things Happen: Mastering Project Management (Theory in Practice), by Scott Burkun



The PMI-ACP Exam: How To Pass On Your First Try, by Andy Crowe



Brilliant Project Management: What the Best Project Managers Know, Say And Do, by Stephen Barker, Rob Cole



Exploring Web Marketing and Project Management, by Donald Emerick



Trading Risk: Enhanced Profitability through Risk Control, by Kenneth L. Grant



PM Crash Course, Premier Edition: A Crash Course in Real-World Project Management, by Rita Mulcahy

Earn PDUs by writing a book review!



PORTLAND CHAPTER

May 2012

Headline Article

Next Chapter Meeting

- Chapter Meeting Sponsor
- Keynote Presentation
- Educational Presentation
- Chapter Meeting Logistics

Professional Development

- Project Risk Management
- Book Reviewers Wanted
- **Roeder Online Courses**
- **Fall PMP/CAPM Prep Course**
- Bubba Watson & Project Risk

Chapter News & Events

- Event Calendar
- Roundtable Meetings
- Vote Now!
- Position Descriptions
- Candidate Profiles
- Ballot
- 2012 Annual Conference

PM News Briefs

Membership

- Join PMI Portland Chapter
- Become a Volunteer!
- PM Job Postings
- Welcome New Volunteers
- Member News
- Photos

Articles

- PMI at the 2012 MS Project Conference

PMI

- President's Letter
- Newsletter Director's Letter
- About PMI Portland

www.pmi-portland.org

Professional Development

Roeder Online Courses

Be sure to check the PMI Portland Chapter [web calendar](#) for all the new online PM related training at a discount to members.

OnDemand Online Courses

360 Awareness: Understand Human & Environmental Factors
4 hours, 4 PDUs

Whole Body Decisions: Synthesize Brain, Heart & Gut
4 hours, 4 PDUs

Project Management Fundamentals: Laying A Strong Foundation
8 Hours, 8 PDUs

Live, Instructor-Led Online Courses

Project Risk Management
Wednesday, May 16 & Wednesday, May 23, 2012
8 PDUs

Earn Buy-In and Win Support
Saturday, May 19 & Saturday, May 25, 2012
8 PDUs

Project Management Fundamentals
Friday, May 25 & Friday, June 1, 2012
8 PDUs

Dynamic Leadership Skills for Better Project Results
Wednesday, June 6 & Wednesday, June 13, 2012
8 PDUs

International Project Management
Friday, June 15 & Friday, June 22, 2012
8 PDUs

Fall PMP/CAPM Prep Course

**Tuesdays and Thursdays,
September 11–October 19, 2012
6:00–9:00 p.m.**

Prepare for PMP or CAPM certification through the Portland Chapter of Project Management Institute. Experienced project managers ready to become certified Project Management Professionals (PMPs), and those looking to establish credibility in the application of project management processes as a Certified Associate in Project Management (CAPM), will benefit from this course which will help you prepare for—and pass—the Project Management Institute (PMI) examination.

Certified PMPs will bring the Project Management Book of Knowledge (PMBOK) methodology and real-world experiences into focus. They will walk you through what you need to know, step-by-step. Core study materials will be covered, with complete review on the last day of the course. Taking the test immediately after the course is recommended.

Attendance in the course will satisfy the education requirement for both the PMP and CAPM application. Students will receive a copy of the PMI PMBOK (4th edition), third-party sample questions, and course study guide. Self-study outside of course hours is required.

Clackamas Community College
Oregon City, OR

Registration Opens Soon

Watch the PMI Portland Chapter web site and your email for more information.



PORTLAND CHAPTER

May 2012

Headline Article

Next Chapter Meeting

- Chapter Meeting Sponsor
- Keynote Presentation
- Educational Presentation
- Chapter Meeting Logistics

Professional Development

- Project Risk Management
- Book Reviewers Wanted
- Roeder Online Courses
- Fall PMP/CAPM Prep Course
- **Bubba Watson & Project Risk**

Chapter News & Events

- Event Calendar
- Roundtable Meetings
- Vote Now!
- Position Descriptions
- Candidate Profiles
- Ballot
- 2012 Annual Conference

PM News Briefs

Membership

- Join PMI Portland Chapter
- Become a Volunteer!
- PM Job Postings
- Welcome New Volunteers
- Member News
- Photos

Articles

- PMI at the 2012 MS Project Conference

PMI

- President's Letter
- Newsletter Director's Letter
- About PMI Portland

www.pmi-portland.org

Professional Development

What Bubba Watson Can Teach Us About Project Risk

Bubba Watson was in trouble. Not life-threatening, but of critical importance to his career. It's the sort of trouble project managers run into when their projects go off the rails. Bubba was trying to win his first major golf tournament. The 33-year-old professional golfer was known for taking risks. He knew that winning requires taking risks. Sometimes, playing it safe is not safe at all. Sometimes, project managers need to take risks too.

Bubba made a mistake. He hit his tee shot deep into the woods. Have you ever made a mistake? Has someone else made a mistake that put you in a difficult position? Bubba had three choices—he could give up, he could play it safe, or he could give it a rip. He chose the latter. When he began working with his caddy, Ted Scott, six years prior, Bubba had said to him, "If I have a swing, I've got a shot." He knew he could do amazing things just given the opportunity. Project managers can do amazing things too. We don't typically get highlighted on national television when we overcome incredible circumstances, but this makes our accomplishments no less amazing.

As Bubba walked up to the ball he began to think about his shot. He "saw it in his head." His caddy played back Bubba's own words, "If you have a swing, you've got a shot." Bubba lined up, began his back swing, and then executed the amazing. He shaped a shot that caused the ball to fly out of the woods in a straight line, then rise and turn dramatically towards the green. The ball landed on the green. Two putts later, Bubba was champion of the world-renowned Master's golf tournament. It all played out yesterday. April 9th, 2012. Analysts say Bubba's whole life was leading up to that moment. Has your moment happened? Will you be prepared when it arrives?

This month, Roeder Consulting shifts its focus to project risk. Roeder Consulting has applied its unique expertise on the human dynamic to the sometimes overly-analytical traditional process of project risk management. Bubba encountered a risk and he won. You encounter risk in your projects and you

find ways to win too. Often, the way out of a tight spot comes from creative and adaptable thinking. Traditional quantitative and qualitative project risk management tools have value. We'll discuss many of them in our new course on project risk. However, we'll go beyond those tools to the most powerful ones you have ... the human component.

Asked later about the shot, Bubba described what he did and said "it was easy." The reporters laughed. He was serious. He knows amazing things can happen. He's right.

The next time your project is in the woods get creative. Tell yourself you can do it, visualize the successful outcome, and let 'er rip.



Tres Roeder, PMP, MBA

About Roeder Consulting:

For the past decade, we have used our balanced approach which blends people skills, business acumen and technical skills to help business and individuals implement their projects and

programs more successfully. Whether you're a senior leader challenged with implementing a strategic imperative or a project manager leading an important initiative, we have the skilled consultants and trainers to help achieve your goals.

Visit us at www.roederconsulting.com/pmiportland.php for project management soft skills training with discounts specific for PMI Portland Chapter.



PORTLAND CHAPTER

May 2012

Headline Article

Next Chapter Meeting

- Chapter Meeting Sponsor
- Keynote Presentation
- Educational Presentation
- Chapter Meeting Logistics

Professional Development

- Project Risk Management
- Book Reviewers Wanted
- Roeder Online Courses
- Fall PMP/CAPM Prep Course
- Bubba Watson & Project Risk

Chapter News & Events

- **Event Calendar**
- Roundtable Meetings
- Vote Now!
- Position Descriptions
- Candidate Profiles
- Ballot
- 2012 Annual Conference

PM News Briefs

Membership

- Join PMI Portland Chapter
- Become a Volunteer!
- PM Job Postings
- Welcome New Volunteers
- Member News
- Photos

Articles

- PMI at the 2012 MS Project Conference

PMI

- President's Letter
- Newsletter Director's Letter
- About PMI Portland

www.pmi-portland.org

Chapter News & Events

MON	TUE	WED	THU	FRI	SAT	SUN
May 7 Super Earlybird deadline–Risk Mgmt.	8	9 OODN Event	10 Roundtable West @ SolarWorld SAO Event	11 Roundtable NW @ Con-Way	12	13
14	Chapter Meeting Voting closed for Board elections SAO Event	16 PMI WV Salem Meeting SAO Event	17 Roundtable West @ Nike PMI WV Eugene Meeting	18 PMI WV Corvallis Meeting	19	20
21	22 Roundtable NE @ Public Health	23	24	25 Roundtable North @ Clark	26	27
28 Earlybird deadline– Risk Management	29	30	31	June 1 Roundtable South @ Mentor Graphics	2	3
4	5	6 Roundtable NE @ Port of Portland	7	8 Roundtable NW @ Con-Way	9	10
11	12	13	14 Roundtable West @ SolarWorld	15 Super Earlybird deadline-Annual Conf	16	17
18 Registration closes– Risk Management	19 Chapter Meeting EPMA Awards	20 PMI WV Salem Meeting Risk Management Workshop	21 PMI WV Eugene Meeting Roundtable West @ Nike	22 PMI WV Corvallis Meeting Roundtable North @ Clark	23	24

For details, see the calendar on the [Chapter web site](#).



PORTLAND CHAPTER

May 2012

Headline Article

Next Chapter Meeting

- Chapter Meeting Sponsor
- Keynote Presentation
- Educational Presentation
- Chapter Meeting Logistics

Professional Development

- Project Risk Management
- Book Reviewers Wanted
- Roeder Online Courses
- Fall PMP/CAPM Prep Course
- Bubba Watson & Project Risk

Chapter News & Events

- Event Calendar
- **Roundtable Meetings**
- Vote Now!
- Position Descriptions
- Candidate Profiles
- Ballot
- 2012 Annual Conference

PM News Briefs

Membership

- Join PMI Portland Chapter
- Become a Volunteer!
- PM Job Postings
- Welcome New Volunteers
- Member News
- Photos

Articles

- PMI at the 2012 MS Project Conference

PMI

- President's Letter
- Newsletter Director's Letter
- About PMI Portland

www.pmi-portland.org

Chapter News & Events

Roundtable NW Con-Way

2055 NW Savier
Portland, OR
Ask for room at desk

2nd Friday 7:15 a.m.

Roundtable West SolarWorld

25300 NW Evergreen Rd.
Hillsboro, OR

2nd Thursday 4:00 p.m.

Roundtable West Nike

Nike World Headquarters,
Beaverton, OR
Nolan Ryan Bldg.,
Air Huarache, 1st Floor

3rd Thursday 7:30 a.m.

Roundtable South Mentor Graphics

8005 SW Boeckman Rd.,
Wilsonville, OR
Commons Bldg., Big
Muddy Conf. Rm.

1st Friday 7:15 a.m.

Roundtable North Clark

1200 Fort Vancouver Way,
Vancouver, WA
Community Room

4th Friday 7:15 a.m.

Roundtable NE Port of Portland

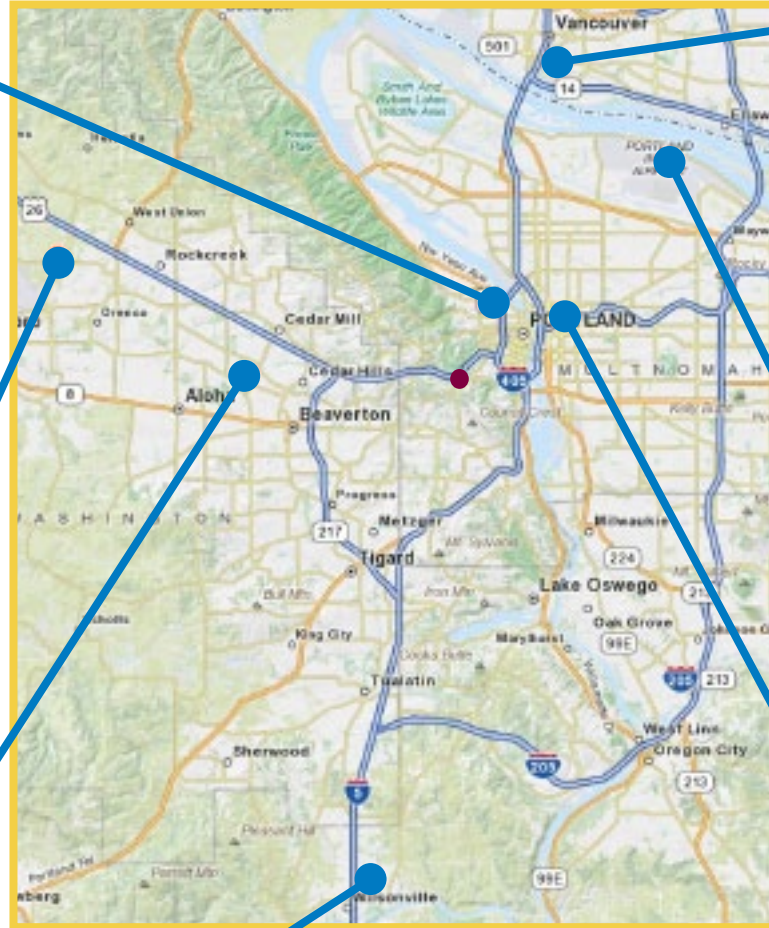
7200 NE Airport Way
Portland, OR
Anchor Rm., 1st floor

1st Wednesday 4:30 p.m.

Roundtable NE Public Health

Portland State Office Bldg.
800 NE Oregon Street,
Portland, OR
Room 1C-30

4th Tuesday 7:30 a.m.



Join Us!

For more information, to see maps, to join a roundtable, to contact the moderator, or to RSVP for meetings, see the PMI Portland Chapter [Roundtable web page](#).



PORTLAND CHAPTER

May 2012

Headline Article

Next Chapter Meeting

- Chapter Meeting Sponsor
- Keynote Presentation
- Educational Presentation
- Chapter Meeting Logistics

Professional Development

- Project Risk Management
- Book Reviewers Wanted
- Roeder Online Courses
- Fall PMP/CAPM Prep Course
- Bubba Watson & Project Risk

Chapter News & Events

- Event Calendar
- Roundtable Meetings
- **Vote Now!**
- **Position Descriptions**
- Candidate Profiles
- Ballot
- 2012 Annual Conference

PM News Briefs

Membership

- Join PMI Portland Chapter
- Become a Volunteer!
- PM Job Postings
- Welcome New Volunteers
- Member News
- Photos

Articles

- PMI at the 2012 MS Project Conference

PMI

- President's Letter
- Newsletter Director's Letter
- About PMI Portland

www.pmi-portland.org

Chapter News & Events

2012–2013 Elections have begun–VOTE NOW!!!

Voting ends at **8 p.m. on May 15**, so don't delay! Vote now for your Chapter Board of Directors candidates. It's easy!

There are three ways to let your voice be heard:

- Click here **VOTE NOW!** to vote electronically.
- Complete the **paper ballot** and mail it to us—it must be received no later than May 15.
- Vote at the **May 15 Chapter meeting**. We'll have ballots there for you.

Be proud of your Candidates! Every candidate for a PMI Portland Board of Directors position has made a major commitment to the members of our dynamic Chapter. This commitment involves their precious time and their desire to bring even more value to your membership.

Every candidate for a Board position is committed to:

- Strategically develop and lead their portfolio to achieve the mission of the Chapter
- Manage their portfolio budget
- Represent their portfolio and the Chapter at monthly Board meetings, Chapter dinner meetings and special events
- Attend annual Board transition and strategy sessions
- Participate in an annual leadership conference
- Learn about and understand their portfolio and the Chapter
- Be a positive spokesman and evangelist for their portfolio and the Chapter
- Carry out the fiduciary, due care, and diligence responsibilities of the Board of Directors by reviewing programs, policies, financial statements and other materials
- Put the interests of the Chapter ahead of any other organization or business when acting as a Board member. Disclose any potential conflicts of interest which could affect decision making
- Serve on committees and offer to take on special assignments

Be sure to congratulate every candidate and thank them for their willingness to represent you.

See below for Position Descriptions and Candidate Profiles.

Position Descriptions

President Elect

The President steers the ship. The President Elect position is elected by the Chapter, serves one year shadowing the current President, and then serves as President for one year. The President then moves to the Past President position to provide advice and insight to the Board of Directors. Working with the Board of Directors and an Executive Committee (consisting of President Elect, Past President, VP at Large, VP Finance, and Chapter Secretary), the President provides Chapter leadership and coordinates all activities.

Secretary

The Chapter secretary provides vital support on a number of fronts: Manages the Chapter document library and contact lists, arranges Board meetings, captures and manages Board meeting notes, issues and action items, oversees and reviews the preparation and retention of all non-financial Chapter records and filings, maintains Chapter asset log, and acquires name tags, business cards and other requested items for Chapter leadership.

Vice President of Membership

The VP Membership promotes member benefits, Chapter activities, programs and member services to assure that members are receiving the most benefit from their Chapter membership. This includes surveying members on their satisfaction with Chapter programs, services and events, and administering a robust volunteer program to allow members

[continued...](#)



PORTLAND CHAPTER

May 2012

Headline Article

Next Chapter Meeting

- Chapter Meeting Sponsor
- Keynote Presentation
- Educational Presentation
- Chapter Meeting Logistics

Professional Development

- Project Risk Management
- Book Reviewers Wanted
- Roeder Online Courses
- Fall PMP/CAPM Prep Course
- Bubba Watson & Project Risk

Chapter News & Events

- Event Calendar
- Roundtable Meetings
- Vote Now!
- Position Descriptions
- **Candidate Profiles**
- Ballot
- 2012 Annual Conference

PM News Briefs

Membership

- Join PMI Portland Chapter
- Become a Volunteer!
- PM Job Postings
- Welcome New Volunteers
- Member News
- Photos

Articles

- PMI at the 2012 MS Project Conference

PMI

- President's Letter
- Newsletter Director's Letter
- About PMI Portland

www.pmi-portland.org

Chapter News & Events

the opportunity to gain invaluable project management, leadership and networking experience. Membership consists of Volunteering, Communication, and Quality sub-committees.

Vice President of Professional Development

The VP of Professional Development manages a portfolio that offers project management related classes and workshops to PMI Portland Chapter members and the community. The portfolio provides top-notch, affordable and timely continuing education opportunities for Chapter members, which includes PMP certification classes. This position also manages the Chapter Mentoring program and is responsible for the planning and execution of the Annual Conference.

Candidate Profiles

President Elect Candidate



Diane Brady, CSM

Diane has over 17 years of project management and consulting experience working in the Computer Software and Information Technology industry. This includes direct involvement in all aspects of managing and executing software implementations, software integrations and software

development related projects, as well as evangelizing and providing leadership for PMO initiatives and standards.

Prior to consulting, Diane held financial and managerial positions such as CFO, Business Manager and related management positions. Diane's passion for and proven track record in developing methodology and managing system process improvements were principal factor that lead her to seek professional consulting roles starting in 1995.

She is currently the Vice President of Professional Development with the PMI Portland Chapter with prior Board experience as

Treasurer, Membership Director, and Development Director with other organizations.

"I have a strong desire to help others, develop sustainable frameworks and systems as needed, and create vision and goals that improve systems and grow people. These qualities and my past experience in project management, professional consulting and financial background are well suited to PMI Portland Chapter leadership. In addition, I want to ensure the PMI Portland Chapter continues to grow and to lead those in the profession successful through the changes that are already occurring in areas such as project agility and leadership."

Secretary Candidate



Willem Stoeller, PMP

Willem has 20 years experience in translation, localization and internationalization of marketing materials, software products and web content. He has 18 years experience as development director on commercial software and IT projects. He is a former Board member of the TAUS Data Association, and

is a Certified Project Management Professional and member of the Project Management Institute. Other relevant experience includes:

- Former Board member of the Project Management Institute Silicon Valley Chapter,
- Former director of workshops for the Project Management Institute Portland Chapter
- Former visiting professor at the Monterey Institute of International Studies
- Other volunteer work: Coast Guard Auxiliary, Department of Fish and Game, Sea Scouts and Big Brothers.

"First of all I am a believer in volunteering in my community. I have been involved in many different volunteering activities including significant PMI Chapter volunteering. As a past

[continued...](#)



PORTLAND CHAPTER

May 2012

Headline Article

Next Chapter Meeting

- Chapter Meeting Sponsor
- Keynote Presentation
- Educational Presentation
- Chapter Meeting Logistics

Professional Development

- Project Risk Management
- Book Reviewers Wanted
- Roeder Online Courses
- Fall PMP/CAPM Prep Course
- Bubba Watson & Project Risk

Chapter News & Events

- Event Calendar
- Roundtable Meetings
- Vote Now!
- Position Descriptions
- Candidate Profiles
- Ballot
- 2012 Annual Conference

PM News Briefs

Membership

- Join PMI Portland Chapter
- Become a Volunteer!
- PM Job Postings
- Welcome New Volunteers
- Member News
- Photos

Articles

- PMI at the 2012 MS Project Conference

PMI

- President's Letter
- Newsletter Director's Letter
- About PMI Portland

www.pmi-portland.org

Chapter News & Events

Board member of two different professional Associations, I can meaningfully contribute to the Portland Chapter Board.”

VP of Membership Candidates



Shelaindra Bhardwaj, PMP

Shelaindra is a Mechanical Engineer with an MBA in Marketing and a certified PMP with over 12+ years experience in successfully managing and delivering programs with multimillion dollar budgets and large global teams. His 26 years of work experience includes 14 years of leadership, management

and engineering experience in the Manufacturing and Automotive Industry, followed by 12+ years in Managing SAP and vendor supplied OEM application projects in the Utility, IT and Manufacturing industries. He is currently Director of Business Development overseeing the NW Region at Sparta Consulting. His wife Kamesh works at Nike and they have two kids in college. Shelaindra loves to spend time with his family, volunteer for his kid's activities and community, traveling, camping, hiking and biking.

“As a Professional Program/Engagement Manager with strong leadership skills and extensive experience across various industry verticals, with high motivation and commitment to volunteer and serve, I find myself an excellent fit for the position at hand where I truly believe I can make significant contributions and make a difference as a member of the PMI Portland Chapter Board. I have successfully lead teams in various leadership capacities setting clear vision, goals and objectives in alignment with the organizational mission and then mentoring, coaching and guiding them through successful delivery and realization. I only know how to put in my very best and no less, and I will bring strong collaboration, value, new ideas and passionate determination to contribute and serve the Board in successfully leading this key portfolio.”



Sarabjeet (Saby) Waraich, PMP

Saby Waraich is a familiar face at Chapter Dinner Meetings and other PMI Portland Chapter activities recruiting volunteers for PMI Portland Chapter as Director of Volunteers. He has been with the PMI Portland Chapter for the last 4 years. He has more than 13 years of experience and works

as a Technology Project Manager with City of Portland. Saby has Bachelor's degree in Computer Science & Engineering and Master's in Engineering & Technology Management. He is a Professor at University of Phoenix & PCC and also PMP/CAPM Prep class instructor for PMI Portland Chapter.

“I have been in the Membership group for the last 4 years and served as Director of Volunteers for last 2 years. I am ready to take some more responsibilities and work effectively to improve Membership portfolio.”



Hoang T. Nguyen

I am a very quiet individual but I can be also very energetic and outgoing. I obtained my Master's degree from University of Phoenix while working full time. Due to financial needs, it was not an easy choice to continue my education, in pursuing my PhD in Public Serving Leadership at the Capella University,

but I am determined to achieving the goals. The goal is to use the knowledge and compassion to develop the products and services to help people who are in need. I hope the experience of PMI Portland Chapter Board will enhance my background.

“Every company needs to think about its future, as well as the individual. As most of us are aware, many young adults are entering into the career mode but are lacking the skills and experiences that enable them to become successful. This will put a great pressure on the company performance, productivity, and long term financial. Learning from my experience, I want to change myself by engaging more into the leadership activity. I

[continued...](#)



PORTLAND CHAPTER

May 2012

Headline Article

Next Chapter Meeting

- Chapter Meeting Sponsor
- Keynote Presentation
- Educational Presentation
- Chapter Meeting Logistics

Professional Development

- Project Risk Management
- Book Reviewers Wanted
- Roeder Online Courses
- Fall PMP/CAPM Prep Course
- Bubba Watson & Project Risk

Chapter News & Events

- Event Calendar
- Roundtable Meetings
- Vote Now!
- Position Descriptions
- **Candidate Profiles**
- Ballot
- 2012 Annual Conference

PM News Briefs

Membership

- Join PMI Portland Chapter
- Become a Volunteer!
- PM Job Postings
- Welcome New Volunteers
- Member News
- Photos

Articles

- PMI at the 2012 MS Project Conference

PMI

- President's Letter
- Newsletter Director's Letter
- About PMI Portland

www.pmi-portland.org

Chapter News & Events

want to become a member of the PMI Portland Chapter Board of Director so that I can apply my education experience to help enhance the Chapter.”

VP of Professional Development Candidate



Patricia Kelley, PMP

Trish is a PMP and certified ScrumMaster with over 10 years of project management experience. She has worked in the health insurance, web technology, startup and banking software information technology industries. In her past 2 positions Trish has been instrumental in developing, tailoring and

providing leadership for PMO initiatives and standards. Trish is the current Assistant VP of Portfolio Management and teaches the time module for the Chapter's PMP Prep Course which she has done for the past 5 years.

“I think that professional development is critical for the advancement of our profession. I believe to stop growing and learning is to stagnate. I think the best way for me to serve my PMI community is to expand my own learning by taking on new leadership responsibilities and to work in the area I am most interested in and have the most enthusiasm for.

I have some experience with this as I've spent the past 3 years furthering my own education in presentation, speaking, leadership and agile project management. I have also spent the past several years as a member of the professional development portfolio as a volunteer instructor for the PMP/CAPM Prep course.”

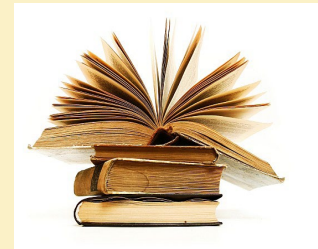
Do you love to read?

The PMI Portland Chapter Newsletter would like to add a “Book Review” section. We invite you send a review of a Project Management related book, along with the following information:

- Book title and Author
- ISBN # (optional)
- Your short bio and photo

Remember—you can earn PDUs for newsletter submissions!

Send your review to newsletter_dir@pmi-portland.org.





PORTLAND CHAPTER

May 2012

Headline Article

Next Chapter Meeting

- Chapter Meeting Sponsor
- Keynote Presentation
- Educational Presentation
- Chapter Meeting Logistics

Professional Development

- Project Risk Management
- Book Reviewers Wanted
- Roeder Online Courses
- Fall PMP/CAPM Prep Course
- Bubba Watson & Project Risk

Chapter News & Events

- Event Calendar
- Roundtable Meetings
- Vote Now!
- Position Descriptions
- Candidate Profiles
- **Ballot**
- 2012 Annual Conference

PM News Briefs

Membership

- Join PMI Portland Chapter
- Become a Volunteer!
- PM Job Postings
- Welcome New Volunteers
- Member News
- Photos

Articles

- PMI at the 2012 MS Project Conference

PMI


- President's Letter
- Newsletter Director's Letter
- About PMI Portland

www.pmi-portland.org

Ballot

Chapter Members—there are three ways to vote. All votes must be received by May 15.

1. Print and mail this ballot.
2. Vote at the Chapter meeting on May 15.
3. Use the [online ballot](#).

 PORTLAND CHAPTER	Official Ballot 2012-2013 Board of Directors PMI Portland Chapter
<p>See the PMI Portland web site for detailed information about positions, candidates, and electronic voting: www.pmi-portland.org</p>	
<p>PMI Membership #: _____</p> <p>Your PMI membership # must be included for your ballot to be counted. Only PMI Portland Chapter members in good standing may vote.</p>	
OFFICE	NOMINEE - Select one for each position
President Elect	<input type="checkbox"/> Diane Brady, CSM Write In _____
Secretary	<input type="checkbox"/> Willem Stoeller, PMP Write In _____
VP of Membership	<input type="checkbox"/> Shelaindra Bhardwaj, PMP <input type="checkbox"/> Sarabjeet (Saby) Waraich, PMP <input type="checkbox"/> Hoang T. Nguyen Write In _____
VP of Professional Development	<input type="checkbox"/> Patricia Kelley, PMP Write In _____
<p><i>All write ins must be a PMI Portland Chapter member in good standing.</i></p>	
Incoming 2012-2013 Board of Directors	
President	Alan John
Past President	Steve Thornton, PMP
VP at Large	Robert Bondaruk, PMP
VP of Finance	Jeff Henderson, PMP
VP of Marketing	Dave Molinari, PMP
VP of Operations	Brad Taylor, PMP
VP of Outreach	Linda Read, PMP
VP of Programs	Christi Loya
<p>*See the Chapter web site for Position Descriptions and Candidate Profiles.</p> <p>Ballots are due by 8:00 p.m. Tuesday, May 15, 2012. Mail your ballot to PMI Portland Chapter, P.O. Box 5966, Portland, Oregon 97228, or Drop it off at the May 15 Chapter meeting. Or, you may vote online: www.pmi-portland.org</p> <p>Election results will be announced via email and on the Chapter web site.</p>	



PORTLAND CHAPTER

May 2012

Headline Article

Next Chapter Meeting

- Chapter Meeting Sponsor
- Keynote Presentation
- Educational Presentation
- Chapter Meeting Logistics

Professional Development

- Project Risk Management
- Book Reviewers Wanted
- Roeder Online Courses
- Fall PMP/CAPM Prep Course
- Bubba Watson & Project Risk

Chapter News & Events

- Event Calendar
- Roundtable Meetings
- Vote Now!
- Position Descriptions
- Candidate Profiles
- Ballot
- **2012 Annual Conference**

PM News Briefs

Membership

- Join PMI Portland Chapter
- Become a Volunteer!
- PM Job Postings
- Welcome New Volunteers
- Member News
- Photos

Articles

- PMI at the 2012 MS Project Conference

PMI

- President's Letter
- Newsletter Director's Letter
- About PMI Portland

www.pmi-portland.org

Chapter News & Events

Register Now for the 2012 Managing Projects Programs & Portfolios Conference

Thursday, August 16, 2012

Lloyd Center DoubleTree Hotel, Portland, Oregon

- **RENEW** your energy!
- **REFRESH** your memory and your vision!
- **REINVEST** in your future!

With the rapid changes in technology, our need as project managers to continuously renew and update our skills has never been more important. This premier professional development conference will help YOU stay current and learn skills to ensure success in your projects.

We are very lucky to have **Steve Rollins** as our keynote speaker—a well-respected, dynamic speaker who will invigorate and re-energize attendees with his presentation, **Growing the Business: The Value Proposition of Project Managers**.

You will have the opportunity to:

- Learn the latest and greatest information about the field of Project Management.
- Choose workshops from three educational tracks: Strategy, Tactics, and Tools.
- Network with colleagues in your field.
- Earn 8 PDUs.

Volunteers Make It Happen

This conference is organized and managed completely by volunteers—lots of volunteers who work at all different levels in many different capacities. Several PMI Portland members deserve recognition for going the extra mile already to organize a high-quality conference providing cutting-edge skills and tools. These are:

- Diane Brady, VP of Professional Development (until July)
- Kristen Funk-Tracy, the Director of the Annual Conference
- Dave Molinari, VP of Marketing and Project Manager of the conference Marketing Team
- Bob Bondaruk, VP At Large and Project Manager of the conference Sponsorship Team
- Cheryl Cruz, Project Manager of the conference Speaker Team
- Divya Jain, Manager of conference Volunteers

Volunteer hours earn PDUs, and if you volunteer at least 8 hours of your time you will be eligible for free conference admission. We welcome your help!

If you would be interested in volunteering to help make this event a success, please contact Divya Jain at divya_naresh@gmail.com. Or contact Kristen Funk-Tracy, the conference director, at annual_conf@pmi-portland.org, 503.502.8145.

Register Now! Super Earlybird pricing for members ends June 15.

PMI Global Conference—North America



October 20-23, 2012
Vancouver, BC, Canada

[Click here for information](#). Details are coming soon.



PORTLAND CHAPTER

May 2012

Headline Article

Next Chapter Meeting

- Chapter Meeting Sponsor
- Keynote Presentation
- Educational Presentation
- Chapter Meeting Logistics

Professional Development

- Project Risk Management
- Book Reviewers Wanted
- Roeder Online Courses
- Fall PMP/CAPM Prep Course
- Bubba Watson & Project Risk

Chapter News & Events

- Event Calendar
- Roundtable Meetings
- Vote Now!
- Position Descriptions
- Candidate Profiles
- Ballot
- 2012 Annual Conference

PM News Briefs

Membership

- Join PMI Portland Chapter
- Become a Volunteer!
- PM Job Postings
- Welcome New Volunteers
- Member News
- Photos

Articles

- PMI at the 2012 MS Project Conference

PMI

- President's Letter
- Newsletter Director's Letter
- About PMI Portland

www.pmi-portland.org

PM News Briefs

PMI Willamette Valley Chapter

Salem Branch Monthly Meeting

Wednesday, May 16, 2012

Presentation starts at 12:00 p.m. (please arrive by 11:40 a.m.)

Location Roth's Conference Center, West Salem
1130 Wallace Rd. NW
Salem, Oregon 97304

Speaker Ryan Cummings

Topic Prioritizing the Value of Your PMO

Cost \$15 (with lunch) or \$12 (speaker only) for PMI Members and \$17 (with lunch) or \$14 (speaker only) for Non-Members

See web site for more details [Salem](#)

Eugene Branch Monthly Meeting

Thursday, May 17, 2012

6:00-8:00 p.m.

Location Red Lion–Eugene
205 Coburg Road
Eugene, OR 97401

Speaker Jim Marks, PMP

Topic TProject Management and Real Estate Investing

Cost \$20 (both PMI and Non-PMI members) Includes a buffet-style dinner prepared by Red Lion Hotel. If you require vegetarian, vegan, or other dietary requirements, please specify in the registration form or contact the VP Programs (VPPrograms@EugenePMI.org) 48 hours in advance of the meeting.

See web site for more details [Eugene](#)

Corvallis Branch Monthly Meeting

Friday, May 18, 2012

Presentation starts at 12:00 p.m. (please arrive by 11:50 a.m.)

Location Corvallis Depot
700 SW Washington Ave.
Corvallis OR 97333

Speaker Daniel Castle

Topic Lean Six Sigma International

Cost \$10 for PMI Members and students. \$15 for non-PMI members. ****NEW RATE**** \$5 for unemployed Project Managers.

See web site for more details [Corvallis](#)




Sign up for Early Bird Discounts

Two Great Workshops – Get Your PDUs

For information see: www.ProgramManagement-Academy.com

<p><i>Achieving Business Success with Program Management</i></p> <p><i>Instructors: Russ Martinelli & Tim Ralschulte, PhD.</i></p> <p><i>May 22-23, 2012</i></p>	<p><i>Deliver Great User Experience: Connecting Strategies, Stories and Requirements</i></p> <p><i>Instructor: Debra Lavell</i></p> <p><i>April 24-25, 2012</i></p>
--	---

*For more information contact
rosi.marshall@programmanagement-academy.com
Or call Rosi at 503-750-3880*



Program Management Academy
Portland, Oregon





PORTLAND CHAPTER

May 2012

Headline Article

Next Chapter Meeting

- Chapter Meeting Sponsor
- Keynote Presentation
- Educational Presentation
- Chapter Meeting Logistics

Professional Development

- Project Risk Management
- Book Reviewers Wanted
- Roeder Online Courses
- Fall PMP/CAPM Prep Course
- Bubba Watson & Project Risk

Chapter News & Events

- Event Calendar
- Roundtable Meetings
- Vote Now!
- Position Descriptions
- Candidate Profiles
- Ballot
- 2012 Annual Conference

PM News Briefs

Membership

- Join PMI Portland Chapter
- Become a Volunteer!
- PM Job Postings
- Welcome New Volunteers
- Member News
- Photos

Articles

- PMI at the 2012 MS Project Conference

PMI

- President's Letter
- Newsletter Director's Letter
- About PMI Portland

www.pmi-portland.org

PM News Briefs

OODN Meeting



Business at the Speed of Now

When: Wednesday, May 9, 2012
6:00-8:30 p.m.

Speaker: John Bernard

Where: Con-Way (Fremont / St. John's rooms)
2055 NW Savier St.
Portland, OR 97209

Pricing: Free to PMI members. Non-members, \$10.

Contact: RSVP to president@odnoregon.org.

Oregon OD Network
14780 SW Osprey Drive, Suite 365
Beaverton, OR 97007

info@odnoregon.org
www.odnoregon.org

SAO Events



SAO Event: Video Killed The Radio Star

When: Thursday, May 10, 2012
6:00-8:00 p.m.

Where: CrowdCompass office: In the Ford Building
2505 SE 11th Ave, # 300
Portland, OR

What Are Mozilla FireFox Add-ons & Why Software Testers Should Care

When: Tuesday, May 15, 2012
12:00-1:00 p.m.

Where: Online Webinar

WebVisions 2012: Explore the Future of the Web

When: Wednesday–Friday, May 16-18, 2012
All day event

Where: Oregon Convention Center
777 NE Martin Luther King Jr. Blvd.
Portland, OR 97232

www.sao.org



PORTLAND CHAPTER

May 2012

Headline Article

Next Chapter Meeting

- Chapter Meeting Sponsor
- Keynote Presentation
- Educational Presentation
- Chapter Meeting Logistics

Professional Development

- Project Risk Management
- Book Reviewers Wanted
- Roeder Online Courses
- Fall PMP/CAPM Prep Course
- Bubba Watson & Project Risk

Chapter News & Events

- Event Calendar
- Roundtable Meetings
- Vote Now!
- Position Descriptions
- Candidate Profiles
- Ballot
- 2012 Annual Conference

PM News Briefs

Membership

- Join PMI Portland Chapter
- Become a Volunteer!
- PM Job Postings
- Welcome New Volunteers
- Member News
- Photos

Articles

- PMI at the 2012 MS Project Conference

PMI

- President's Letter
- Newsletter Director's Letter
- About PMI Portland

www.pmi-portland.org

PM News Briefs

Primavera Lunch & Learn



Are you looking to be introduced to Primavera for the first time? Maybe you are an existing customer who wants to learn about what's new with Primavera and reconnect with the Primavera user community within the Portland Metro Area? This lunch & learn will be a great opportunity to network with the Primavera team as well as with other project managers, project controls professionals, directors of project management offices (PMOs), Project Management Professionals (PMPs) and executives in the Portland area.

Erica Walitsch, a Portland-based solutions consultant, will present on what's new and exciting about Oracle Primavera's latest solution offering including how to:

- Select the right strategic mix of projects
- Plan, schedule, and control large-scale programs and individual projects
- Balance resource capacity with project demand
- Monitor and visualize project performance vs. plan
- Foster team collaboration
- Integration with financial management and human capital management systems
- Customer success stories

The event will be offered on Thursday, June 21 for new customers and Friday, June 22 for existing customers from 12:00–1:30 at the Oracle office in downtown Portland @ 1211 SW Fifth Ave. Suite 800

We hope you'll join us at this exciting event!

There are also opportunities to get involved in a [Primavera user group](#). In North America, information on the Primavera Special Interest Group (SIG) can be found [here](#). The Primavera SIG sits across the main user groups and is dedicated to providing best practices, tips and techniques, and a forum for discussion and education for the Primavera customer community.

Keep your E-mail Address Current!

Don't miss a thing from PMI Portland Chapter.

Members—We use your profile information from pmi.org. Please check your profile on the PMI Global site to be sure your email address is current—it will then be loaded into our database.

Non-members—You can log into the PMI Portland web site, go to My Profile > My Profile tab > Edit Profile, and change your email address here.

Roundtable and Job Posting members—Remember that you may have set a different email address for these posts. Log in to the PMI Portland web site, go to My Profile > My Features tab > E-Lists to check the email address that is being used.



PORTLAND CHAPTER

May 2012

Headline Article

Next Chapter Meeting

- Chapter Meeting Sponsor
- Keynote Presentation
- Educational Presentation
- Chapter Meeting Logistics

Professional Development

- Project Risk Management
- Book Reviewers Wanted
- Roeder Online Courses
- Fall PMP/CAPM Prep Course
- Bubba Watson & Project Risk

Chapter News & Events

- Event Calendar
- Roundtable Meetings
- Vote Now!
- Position Descriptions
- Candidate Profiles
- Ballot
- 2012 Annual Conference

PM News Briefs

Membership

- [Join PMI Portland Chapter](#)
- [Become a Volunteer!](#)
- [PM Job Postings](#)
- [Welcome New Volunteers](#)
- [Member News](#)
- [Photos](#)

Articles

- [PMI at the 2012 MS Project Conference](#)

PMI

- [President's Letter](#)
- [Newsletter Director's Letter](#)
- [About PMI Portland](#)

www.pmi-portland.org

Membership

Join the PMI Portland Chapter

PMI Portland Chapter is a local chapter of the international organization, PMI (Project Management Institute). The PMI Portland Chapter prides itself on being an active and growing project management community and is one of the largest chapters in the Pacific Northwest.

How to Join

To become a member of the Portland Chapter, you must first join PMI Global. You can join online or download an application.

Click [here](#) to join PMI Global. You will be given an opportunity to join a chapter. Select the Portland Chapter (C031) from the list.

If you're already a PMI member and want to join the PMI Portland Chapter, you can renew using the link above.

We are honored to welcome you as a new member! You will begin receiving the benefits of membership right away!

Membership Benefits

- Network with Project Management Professionals
- Professional Development
- Discounts on Chapter Events
- Monthly Roundtables
- PMI Portland Chapter Monthly Newsletter
- Current Job Listings
- Volunteer Opportunities

Membership Costs

Join: PMI Membership costs \$129/year. PMI Portland Chapter membership costs \$25/year

Renew: PMI Membership renewal costs \$119/year. PMI Portland Chapter membership renewal costs \$25/year

Discounts: Retired members pay just \$60 per year for PMI membership. Must be a PMI member in good standing for five consecutive years and have retired from active employment.

Students may join PMI for just \$30 per year, plus a \$10 application fee for new members. Membership is open to any student enrolled in a degree-granting program at an accredited, or global equivalent, college or university.

Test Drive a Membership

Would you like to come to a [PMI Portland Chapter event](#) to meet some of your fellow project management professionals and see what the Chapter is all about? You're welcome to attend, even as a non-member!

Get on our mailing list! PMI Portland members automatically receive e-mail announcements of all Chapter events and monthly newsletters—and you can too. If you would like to receive Chapter announcements and newsletters, fill out our [Non-Member Sign up form](#).

For More Information

Please visit the [PMI Portland Chapter web site](#). Read the [Chapter brochure](#).





PORTLAND CHAPTER

May 2012

Headline Article

Next Chapter Meeting

- Chapter Meeting Sponsor
- Keynote Presentation
- Educational Presentation
- Chapter Meeting Logistics

Professional Development

- Project Risk Management
- Book Reviewers Wanted
- Roeder Online Courses
- Fall PMP/CAPM Prep Course
- Bubba Watson & Project Risk

Chapter News & Events

- Event Calendar
- Roundtable Meetings
- Vote Now!
- Position Descriptions
- Candidate Profiles
- Ballot
- 2012 Annual Conference

PM News Briefs

Membership

- Join PMI Portland Chapter
- **Become a Volunteer!**
- **PM Job Postings**
- **Welcome New Volunteers**
- Member News
- Photos

Articles

- PMI at the 2012 MS Project Conference

PMI

- President's Letter
- Newsletter Director's Letter
- About PMI Portland

www.pmi-portland.org

Membership

Become a Volunteer

Grow your network and your skill set! These are some of the volunteer opportunities currently available:

- **Director of Technology**–Operations team
- **Quality Team Members (4)**–Membership team
- **Program Manager, Annual Survey**–Membership team
- **Instructors, Certification Prep course**–Professional Development team
- **Mentoring Program Administrator**–Professional Development team

For more information, go to the [Volunteer Opportunities](#) page on the Chapter web site, or contact our Director of Volunteers at volunteer@pmi-portland.org.

You will be glad you did!

PM Job Postings

These are the four most recent job openings sent to PMI Portland Chapter members who have joined our Job Posting Service.

- Senior IT Project Manager, Oregon Employment Division
- Project Manager III, Electrical Sector
- Business System Analyst, Portland
- Sr. Technical Business Systems Analyst, Portland

For complete information about the Job Posting Service, including instructions about how **Chapter members** can participate, visit the [Job Posting Signup](#) web page.

Welcome New Volunteers!



Susan Pommier, Director of Registration

Susan has lived in the Portland area for almost 25 years. She is presently working as a contractor which has given her the opportunity to broaden her experience base in the project management world. She has worked in the high tech, energy, health insurance and financial industries.

She served the Portland PMI Chapter as the Director of Registration from 2010-2011. Susan looks forward to new opportunities presented through volunteer work. She has a passion for learning and likes taking classes on diverse subjects. In her spare time she gardens, writes, develops both databases and web sites and spends as much time as possible enjoying her grandchildren. She holds a Masters in Project Management and is working to get her PMP certification early this summer.



Dick Sperry, Ass't. Director of Workshops

Dick Sperry, PMP is an independent Management Consultant with more than 30 years of experience in technology. He is accomplished in strategic planning, process reengineering, portfolio management, quality assurance and project management.

He has a proven record of accomplishment in fiscal management, integrated control and management of risks. He assessed and monitored government out-sourced programs and projects for quality assurance and risks. Richard has a Bachelor's in Computer Science from SUNY Potsdam, Master's in Engineering and Technology Management from Portland State University, and is currently conducting his PhD dissertation research linking stakeholder engagement to technology planning in support of proactive Corporate Social Responsibility at Portland State University.



PORTLAND CHAPTER

May 2012

Headline Article

Next Chapter Meeting

- Chapter Meeting Sponsor
- Keynote Presentation
- Educational Presentation
- Chapter Meeting Logistics

Professional Development

- Project Risk Management
- Book Reviewers Wanted
- Roeder Online Courses
- Fall PMP/CAPM Prep Course
- Bubba Watson & Project Risk

Chapter News & Events

- Event Calendar
- Roundtable Meetings
- Vote Now!
- Position Descriptions
- Candidate Profiles
- Ballot
- 2012 Annual Conference

PM News Briefs

Membership

- Join PMI Portland Chapter
- Become a Volunteer!
- PM Job Postings
- Welcome New Volunteers
- **Member News**
- Photos

Articles

- PMI at the 2012 MS Project Conference

PMI

- President's Letter
- Newsletter Director's Letter
- About PMI Portland

www.pmi-portland.org

Membership

Welcome New Members!

- | | |
|----------------------|-------------------------|
| Attaway, Gayle | Lionne, L B |
| Block, Joseph | Little Parmeter, Lauren |
| Bushek, Ryan | Lum, Meei |
| Cespedes, Tim | Mayer, Shanon |
| Coronel, Flordeliz | Pink, Kendra |
| Cruz, Jason | Powell, Tasha |
| Donald, Bernadette | Reagin, Erin |
| Ferber, Hannah | Richards, Kenneth |
| Gadea, Francisco | Rupp, Melinda Jamie |
| Goetzinger, Lauren | Schmidt, Nicholas |
| Halladay, Charles | Seow, Sheng Wen |
| Hendrickson, Justin | Spurling, Thomas |
| Henning, Cindra | Surratt, Randy |
| Hooper, Linda Anne | Sword, Bonnie |
| Hutchison, Sam | Wall, Alexander |
| Kletzok, Angela | Watt, W. Eric |
| Kolber, Susan | Woodell, Aaron |
| Lenker, Ron | |
| Leuenberger, Kathryn | |

Congratulations New Credential Holders!

- | | |
|----------------------------|--------------------------|
| deBoer, Kathleen, PMP | Manthey-Waldo, Lori, PMP |
| Deschuytter, Benjamin, PMP | Millard, Melissa, PMP |
| Gadea, Francisco, PMP | Neill, Lydia, PMP |
| Greger, Ronda, PMP | Olson, Jeffrey, PMP |
| Khamvongsa, Sophin, PMP | Pandya, Vihang, PMP |
| Laughlin, Barbara, PMP | Price, Darrick, PMP |
| Luken, Christopher, PMP | Southard, Robyn, PMP |
| Lyons, Kevin, PMP | |

Membership information is provided to the Chapter monthly by PMI GOC. There may be a delay in seeing your name on this page due to newsletter publishing constraints. Go to PMI GOC at www.pmi.org to change or manage your membership profile information.

PMI Credentials

The **Project Management Professional (PMP)®** is the most important globally-recognized and independently validated credential for project managers, perfect if you have demonstrated experience and competence in leading project teams.

The **Certified Associate in Project Management (CAPM)®** is a good entry-level certification if you're new to project management, or still figuring out your career path.

The **Program Management Professional (PgMP)®** is designed for those who manage multiple, complex projects to achieve strategic and organizational results.

The **PMI Scheduling Professional (PMI-SP)®** is a specialty credential for practitioners who want to focus on developing and maintaining project schedules.

The **PMI Risk Management Professional (PMI-RMP)®** is a specialty credential that demonstrates competence in assessing project risks, mitigating threats and capitalizing on opportunities.

The **PMI Agile Certified Practitioner (PMI-ACP)®** recognizes knowledge of agile principles, practices and tools and techniques across agile methodologies.

For more information about PMI Certification, visit the PMI Global web site at www.pmi.org/Certification.aspx.



PORTLAND CHAPTER

May 2012

Headline Article

Next Chapter Meeting

- Chapter Meeting Sponsor
- Keynote Presentation
- Educational Presentation
- Chapter Meeting Logistics

Professional Development

- Project Risk Management
- Book Reviewers Wanted
- Roeder Online Courses
- Fall PMP/CAPM Prep Course
- Bubba Watson & Project Risk

Chapter News & Events

- Event Calendar
- Roundtable Meetings
- Vote Now!
- Position Descriptions
- Candidate Profiles
- Ballot
- 2012 Annual Conference

PM News Briefs

Membership

- Join PMI Portland Chapter
- Become a Volunteer!
- PM Job Postings
- Welcome New Volunteers
- Member News
- **Photos**

Articles

- PMI at the 2012 MS Project Conference

PMI

- President's Letter
- Newsletter Director's Letter
- About PMI Portland

www.pmi-portland.org

Membership



Panel facilitator Jeff Oltmann– Synergy Professional Services, and panelists Christina Bonda-Riva–Iberdrola Renewables, Andrew Smith–Cambia Health Solutions, April Sobetzki–Columbia Sportswear, Robert Bondaruk–Port of Portland.



Michael Dawson, Oracle corporation



Linda Gammill, Atos IT Solutions & Services



William Fisher, PCC CLIMB program



Brad Hermanson, PE PMP, GEI, Educational speaker

Many thanks to Erik Odegard and Laura Sakaguchi for the photos from the April 2012 Chapter Meeting



PORTLAND CHAPTER

May 2012

Headline Article

Next Chapter Meeting

- Chapter Meeting Sponsor
- Keynote Presentation
- Educational Presentation
- Chapter Meeting Logistics

Professional Development

- Project Risk Management
- Book Reviewers Wanted
- Roeder Online Courses
- Fall PMP/CAPM Prep Course
- Bubba Watson & Project Risk

Chapter News & Events

- Event Calendar
- Roundtable Meetings
- Vote Now!
- Position Descriptions
- Candidate Profiles
- Ballot
- 2012 Annual Conference

PM News Briefs

Membership

- Join PMI Portland Chapter
- Become a Volunteer!
- PM Job Postings
- Welcome New Volunteers
- Member News
- Photos

Articles

- [PMI at the 2012 MS Project Conference](#)

PMI

- President's Letter
- Newsletter Director's Letter
- About PMI Portland

www.pmi-portland.org

Articles

The Project Management Institute (PMI) at the 2012 Microsoft Project Conference

I recently had the opportunity to attend an industry conference on behalf of the [PMI Scheduling Community of Practice](#) with the express intent of bringing knowledge back to the wider community from that event.

The Microsoft Project Conference is one of the very large industry events that is focused on managing projects, programs, and more recently portfolios, that provides Networking and Knowledge sharing opportunities to a significant subset of the more than 22 million users of Project worldwide, with more than 1,500 attending from around the world.

Although there were no major releases of software announced at this year's conference, there were a significant number of organizations present that are now utilizing enterprise project management / scheduling systems and attributing their success to it ... and we got to see a sneak peak at Project 2010 running on Windows 8.

The following highlights will hopefully provide you with a high level awareness of the event that attracted some 1,500 practitioners, training and consulting vendors and partners, who all share one common connection—to meet the changing collaboration and project management needs, within organizations of all sizes.

2012 Project Conference

The 2012 Microsoft Project Conference, held 19-22 March 2012 in Phoenix Arizona, attracted over 1,500 project professionals, business and technical decision makers along with key members from the Microsoft Project team. Premier sponsors for the 3 day event included Pcubed, TPG, and UMT. This was the 4th Project Conference over the past decade with participants attending from 6 out of 7 continents, from 44 different countries.

The Exhibition Hall

There were a host of Sponsors & Exhibitors on hand (all of which you can see [here](#)) representing some 40 major project management organizations.

The Microsoft Project User Group (MPUG), a professional association which currently has over 40,000 members worldwide, was the Community Sponsor (I received my "It's All About Me" shirt from Kirk Vantene, Director, Systems and Services at MPUG).

The Project Management Institute (PMI) was an exhibitor with participation by Rory McCorkle and Priya Sethuraman, Product Managers for the PMP, and PMI-SP, PMI-RMP, PMI-ACP credentials respectively. "It was a pleasure to have multiple Chapter members from across the United States stop by and talk about how good it felt to see something so familiar and they loved, referencing PMI. They also mentioned how much they enjoyed volunteering for the profession and PMI, which reiterates how significant volunteerism is for the success of the Institute," states Sethuraman. PMI currently has over 350,000 members with a large number already involved with their [online Communities of Practice](#) with some 4,600 members currently engaged in the [Scheduling Community of Practice](#).

The Keynote (Day 1)



Kirk Koenigsbauer, Corporate Vice President of the Microsoft Office Division Product Management Group, opened the 3 day conference in sunny Phoenix Arizona with his keynote address. Kirk provided a

[continued...](#)



PORTLAND CHAPTER

May 2012

Headline Article

Next Chapter Meeting

- Chapter Meeting Sponsor
- Keynote Presentation
- Educational Presentation
- Chapter Meeting Logistics

Professional Development

- Project Risk Management
- Book Reviewers Wanted
- Roeder Online Courses
- Fall PMP/CAPM Prep Course
- Bubba Watson & Project Risk

Chapter News & Events

- Event Calendar
- Roundtable Meetings
- Vote Now!
- Position Descriptions
- Candidate Profiles
- Ballot
- 2012 Annual Conference

PM News Briefs

Membership

- Join PMI Portland Chapter
- Become a Volunteer!
- PM Job Postings
- Welcome New Volunteers
- Member News
- Photos

Articles

- **PMI at the 2012 MS Project Conference**

PMI

- President's Letter
- Newsletter Director's Letter
- About PMI Portland

www.pmi-portland.org

general sense of what the Office Division broadly is doing, about their strategic direction, and the vision for what they are trying to achieve with Information and Knowledge Workers.

Kirk spoke about one of the biggest transformations that they see happening in Information Technology (IT) today, which is around Services or The Cloud. Kirk also talked about what they are seeing in the Project and Portfolio Management space, some of the trends, about the Microsoft offering, and offered a sneak peak on Windows 8 Consumer Preview, demonstrating MS Project on a Samsung Slate tablet device.

“There are a couple of key trends that we think are incredibly important and really shaping the way work is getting done” indicates Koenigsbauer.

- The plethora of devices that are exploding in people’s personal and work lives
- The consumerization of IT (by 2016, 70% of work tablets bought by employees. (Forrester)
- Transformation to the Cloud (30% of software purchases via cloud by 2014. Per Analyst)

“It is a big transformation that’s happening. There is no question, the way work is happening today is just very different than it was 2, 3, 4, 5 years ago. Some of these trends around devices, consumerization, and certainly the cloud, are really a big part of that,” states Koenigsbauer.

Kirk also talked about what they are seeing in the Project Management space, “There is a lot of change that’s happening in the Project Management space ... really driven by the greater world that we live in. It’s a very complex, global, highly competitive world that we are seeing ... and companies are being pushed to be more efficient than they have ever been before”.

We have recently come out of the worst global economy that we have seen in several generations and it has taught us a very important lesson, “Businesses have to be much more efficient with the resources that we have ... and things like Portfolio Management and Project Management really become a strategic competency that businesses need to have to be able to

stay competitive and be able to optimize and be able to deliver the kinds of solutions that it needs for the business”.

Kirk also emphasized the need for near real-time information access and for enterprises to ensure that these systems are not silo’d “systems that are deeply integrated with the rest of the Information Technology in the organization”. “In particular that the Project Management systems and the Portfolio Management systems be integrated in with the other Line of Business (LOB) applications...and for that matter, LOB data integrated into the Project systems themselves”.

The Keynote (Day 2)

On the 2nd day of the event, Chris Crane, Director, Project and Visio Product Marketing, introduced Ludovic Hauduc, GM for the Project Management Engineering team.



Ludo indicated that there are over 1,400 Enterprise Project Management Partners worldwide, spread across 83 countries. “When I zoom in to the MVP communities, the Most Valuable Professionals, the undisputed experts around Project and Project Server, that community has grown 60% since [the] last Project Conference [in 2010]”, states Hauduc.

continued...



PORTLAND CHAPTER

May 2012

Headline Article

Next Chapter Meeting

- Chapter Meeting Sponsor
- Keynote Presentation
- Educational Presentation
- Chapter Meeting Logistics

Professional Development

- Project Risk Management
- Book Reviewers Wanted
- Roeder Online Courses
- Fall PMP/CAPM Prep Course
- Bubba Watson & Project Risk

Chapter News & Events

- Event Calendar
- Roundtable Meetings
- Vote Now!
- Position Descriptions
- Candidate Profiles
- Ballot
- 2012 Annual Conference

PM News Briefs

Membership

- Join PMI Portland Chapter
- Become a Volunteer!
- PM Job Postings
- Welcome New Volunteers
- Member News
- Photos

Articles

- PMI at the 2012 MS Project Conference

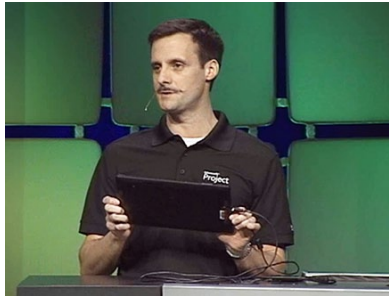
PMI

- President's Letter
- Newsletter Director's Letter
- About PMI Portland

www.pmi-portland.org

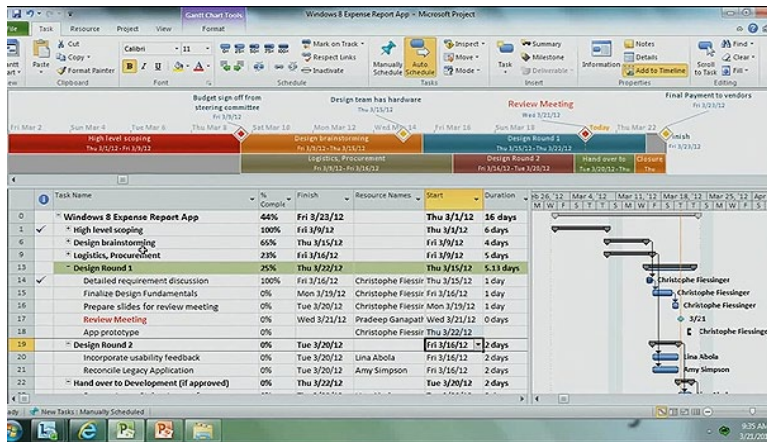
The Demo

Ludo introduced Pradip GanapathyRaj , Principal Program Manager Lead at Microsoft and Christophe Fiessinger, Senior Technical Product Manager for Microsoft Office Project Server, who presented an awesome demonstration of the Microsoft Office solution, including an inspiring peek of the future version of Windows 8 .



Pradip (in the role of Project Manager) demonstrated synchronizing a Project 2010 schedule update to SharePoint running on Office 365. Meanwhile Christophe (as a self-employed Graphic Designer standing in a coffee shop) is working on his brand new tablet using the Consumer Preview version of Windows 8.

The demonstration illustrated the reach of the capabilities of the Microsoft project management solution, and the overall collaboration capabilities of the Office, Lync, and Messenger Metro Application (that recently shipped).



The Journey Ahead

“So where do we go from here?” asks Ludo and he answers “I believe that we are converging to what I think is an unprecedented convergence and broadening of Project Management in the Enterprise ... touching a broader set of people in the Enterprise. It’s really the kind of the dawn of Project Management for all. Now, it doesn’t mean that everyone in the Enterprise will need to be PMP certified at some point.... as a matter of fact, we used to think that our mission in the Project Team was to bring people all the way up the Maturity scale, tapping into the masses of aspiring project managers and move them all the way up to the EPM nirvana. I used to think that was our goal. I don’t think that is true anymore”. Ludo went on to say, “I think a lot of people benefit from EPM in the Enterprise but there a lot of people that deal with unstructured tasks..ad-hoc activities”.

Ludo goes on to share his vision, “We are also seeing an evolution of the workforce. People communicate and collaborate today more than they’ve ever done before, but they are doing it in a very different way.” A couple decades back, email was the cool new technology and now our kids are using texts, tweets, and IMs”. “The workforce is evolving. Project Management is becoming increasingly a social, inclusive, and highly collaborative discipline”. “How do we cater to the new workforce ... people who have those expectations ... people who expect and assume the cloud ... people who expect and assume devices? Processes and tools need to adapt to this change”.

He concluded his remarks by saying “In the end, it’s really about providing tools that allow people to manage their entire world of work...it’s not just about Project Management...it is really about Work Management”.

I caught up with Ludo later that evening and we discussed his remarks about PMP certification and he assured me that still

continued...





PORTLAND CHAPTER

May 2012

Headline Article

Next Chapter Meeting

- Chapter Meeting Sponsor
- Keynote Presentation
- Educational Presentation
- Chapter Meeting Logistics

Professional Development

- Project Risk Management
- Book Reviewers Wanted
- Roeder Online Courses
- Fall PMP/CAPM Prep Course
- Bubba Watson & Project Risk

Chapter News & Events

- Event Calendar
- Roundtable Meetings
- Vote Now!
- Position Descriptions
- Candidate Profiles
- Ballot
- 2012 Annual Conference

PM News Briefs

Membership

- Join PMI Portland Chapter
- Become a Volunteer!
- PM Job Postings
- Welcome New Volunteers
- Member News
- Photos

Articles

- [PMI at the 2012 MS Project Conference](#)

PMI

- President's Letter
- Newsletter Director's Letter
- About PMI Portland

www.pmi-portland.org

feels that PM certification is really important, that the point he was making is there is a larger aspect of Work Management that Microsoft is now addressing. Interesting though that Wikipedia defines "Work Management" as "Work in project management is the amount of effort applied to produce a deliverable or to accomplish a task (a terminal element) or a group of related tasks defined at the same level in the WBS." So what will the degree of difference between Project and Work Management? Size of effort? Immediacy of need? After all, isn't every work effort actually a Project? Perhaps Work Management will be Microsoft's brand for PM in the Cloud.



The Sessions

Featuring close to 100 presentations (spread over the 3 days) there was no shortage of extremely informative sessions. This was by far the best organized (kudos to the Microsoft and Dynamic Events conference) rich with learning opportunities for both novice and experienced project management professionals. Some sessions were so well attended the logistics team was stopping people at the door to comply with fire marshal regulations.

The sessions were organized into the following tracks:

- Business Value and Insights—aimed at the decision makers and business managers
- Product Sessions—for the Microsoft Project Portfolio Management (PPM) practitioners
- Deployment, Administration, and Developer—aimed at the IT Professionals and Developers

My Observations

This was a real homecoming event for me, in that I had the opportunity to meet and greet my colleagues from Microsoft (who I had the pleasure of working with for some 5 years), from all of the key partners that I am still actively engaged with, and as I was in the PMI booth for a good part of the 3 days, I also had the pleasure of meeting a large number of individuals from all over the world.

The evening networking activities were very well organized and Microsoft and their sponsors were wonderful hosts. This in fact was one of the most organized events that I have ever been to (Microsoft and the Dynamic Events event management team did a fantastic job, ensuring that all creature comforts were addressed).

The opportunities for networking and knowledge sharing at these industry events is incredible. All sessions were recorded and made available to participants through the [Project conference 2012 web site](#) with complete videos of the keynotes and presenters, via an authenticated access mechanism called MyPC. Well over 100 hours of presentations from the [sessions](#).

Phoenix provided all with a "cool" reception on the first day (as was noted by Kirk Koenigsbauer with his unseasonable cool temperature graph), however it was short-sleeve weather by the third day of the event (you know, just before it's time to head for the airport—it always seems to work that way).

In Closing

The world of Project Management is quickly moving beyond the science of defining Work Breakdown Structures (WBS), scheduling methods such as Critical Path Method (CPM), and Resource and Cost Management of Deliverables. Albeit these are the fundamental building blocks of any work based solution, vendors like Microsoft are now shifting their focus to a broader perspective that includes workers and the work they are challenged with managing ... Work Management for the masses, so to speak.

[continued...](#)



PORTLAND CHAPTER

May 2012

Headline Article

Next Chapter Meeting

- Chapter Meeting Sponsor
- Keynote Presentation
- Educational Presentation
- Chapter Meeting Logistics

Professional Development

- Project Risk Management
- Book Reviewers Wanted
- Roeder Online Courses
- Fall PMP/CAPM Prep Course
- Bubba Watson & Project Risk

Chapter News & Events

- Event Calendar
- Roundtable Meetings
- Vote Now!
- Position Descriptions
- Candidate Profiles
- Ballot
- 2012 Annual Conference

PM News Briefs

Membership

- Join PMI Portland Chapter
- Become a Volunteer!
- PM Job Postings
- Welcome New Volunteers
- Member News
- Photos

Articles

- **PMI at the 2012 MS Project Conference**

PMI

- President's Letter
- Newsletter Director's Letter
- About PMI Portland

www.pmi-portland.org

The introduction of the next generation workforce (and their hunger for real-time collaboration) will likely have a significant impact on their choice of tools, methods, and techniques. Will the plan full and managed ways of our current approach to managing work yield to a more reactive and “agile” approach to Work Management.

One thing for sure, given the fact that organizations (of all sizes) are moving quickly toward adopting some form of project / work management solution, there will be plenty of work for us practitioners that are skilled and competent in the areas of Planning &Scheduling, Project and Work Management, and Collaboration.

Imagine a whole new generation that actually utilize a deterministic approach to model and execute their work. Regardless of our specific affinity or passion in this industry, it feels good to be a part of something that is so vibrant and growing...something that will provide our future generations with a better way...perhaps an even simpler way...of [Breaking Things Down and Getting it Done!!](#)

Upcoming Events

The remainder of 2012 will include a number of key events focused on Project Management and the tools, methods, and tools of Scheduling, including:

- [The PMI Scheduling Community of Practice](#)—9th annual conference is being held at the New York Marriott at the Brooklyn Bridge, NY, May 6-9, 2012. This exciting and informative 3-day conference will feature over 60 sessions and present how organizations everywhere are obtaining remarkable business value from Project Scheduling. Learn how world-wide organizations are advancing the techniques, practice and profession of Project Scheduling and establishing practice standards for the Project Management profession.

- [Oracle Open World 2012](#)—now includes the Oracle | Primavera solution. The conference will attract some 45,000 attendees that will be hosted by the City of San Francisco, September 30 thru 4 October 2012 at the Moscone Center. Oracle acquired Primavera Software, Inc., a leading provider of Project Portfolio Management (PPM) solutions for project-intensive industries.
- [PMI Global Congress 2012 North America](#)—will be hosted in Vancouver BC Canada, October 20-23 October 2012. Over 3,000 attendees from around the globe shared experiences at PMI® Global Congress 2011 North America in Dallas, so we are hoping to see everybody in Vancouver.

About the Author



Doc Dochtermann, PMP, PMI-SP, MCTS, CISSP, is the Marketing Lead for the PMI Scheduling Community of Practice. You can contact Doc at docdoc@vcleader.pmi.org.



PORTLAND CHAPTER

May 2012

Headline Article

Next Chapter Meeting

- Chapter Meeting Sponsor
- Keynote Presentation
- Educational Presentation
- Chapter Meeting Logistics

Professional Development

- Project Risk Management
- Book Reviewers Wanted
- Roeder Online Courses
- Fall PMP/CAPM Prep Course
- Bubba Watson & Project Risk

Chapter News & Events

- Event Calendar
- Roundtable Meetings
- Vote Now!
- Position Descriptions
- Candidate Profiles
- Ballot
- 2012 Annual Conference

PM News Briefs

Membership

- Join PMI Portland Chapter
- Become a Volunteer!
- PM Job Postings
- Welcome New Volunteers
- Member News
- Photos

Articles

- PMI at the 2012 MS Project Conference

PMI

- [President's Letter](#)
- [Newsletter Director's Letter](#)
- [About PMI Portland](#)

www.pmi-portland.org

PMI

President's Letter



Summer is coming!

The last two Chapter meetings before our summer break are coming soon. Both will have educational and keynote speakers, but there is important Chapter business as well:

In the May meeting, we will be accepting ballots for the Board election. Voting will close at 8:00 p.m. the night of the dinner meeting. See [page 14](#) or the Chapter web site for details and instructions on how to vote between now and the meeting.

In the June meeting, there will be a brief annual business update presentation.

Please plan on attending the next two meetings, and check the web site for events over the summer break.

As always, I would like to say thank you to all our returning members and welcome new members to the Chapter, I hope you take full advantage of all the benefits your Global and Chapter membership provides. Your Board and Volunteers are always ready and willing to answer any questions you may have about membership benefits, activities, and volunteer opportunities.

*Steve Thornton,
President, PMI Portland Chapter*

Thought for the month

“In the depth of winter, I finally learned that within me there lay an invincible summer.”

—*Albert Camus*

Newsletter Director's Letter



Why Not Volunteer?

One of the easier ways to earn PDUs is to [volunteer](#). I can speak from experience—the time I have given to the PMI Portland Chapter has been not only a rewarding experience, but has helped me expand my horizons. I would encourage any member to consider volunteering for this Chapter.

There are many opportunities to learn more about project management through volunteering. There is a saying: “If you always give a little more than you are asked to do, you will always get back a lot more! The generous person always gains more in the end.” I wholeheartedly believe this is true!

Remember there is a “secret word” hidden somewhere in this newsletter. There will be TWO winners! Read my letter from [March](#) for details.

Also, I am still looking for my replacement. If you are interested, please contact me. There is only one more newsletter that I will be overseeing.

I am always open to any feedback, suggestions or submissions to the newsletter. You can contact me by e-mail at newsletter_dir@pmi-portland.org. Remember, this is **your** newsletter.

*Laura Sakaguchi, CAPM
Newsletter Director, PMI Portland Chapter*



PORTLAND CHAPTER

May 2012

Headline Article

Next Chapter Meeting

- Chapter Meeting Sponsor
- Keynote Presentation
- Educational Presentation
- Chapter Meeting Logistics

Professional Development

- Project Risk Management
- Book Reviewers Wanted
- Roeder Online Courses
- Fall PMP/CAPM Prep Course
- Bubba Watson & Project Risk

Chapter News & Events

- Event Calendar
- Roundtable Meetings
- Vote Now!
- Position Descriptions
- Candidate Profiles
- Ballot
- 2012 Annual Conference

PM News Briefs

Membership

- Join PMI Portland Chapter
- Become a Volunteer!
- PM Job Postings
- Welcome New Volunteers
- Member News
- Photos

Articles

- PMI at the 2012 MS Project Conference

PMI

- President's Letter
- Newsletter Director's Letter
- **About PMI Portland**

www.pmi-portland.org

PMI Portland Chapter

Board of Directors

The PMI Portland Chapter Board of Directors wants to hear from you!

President Steve Thornton
president@pmi-portland.org

President Elect Alan John, PMP
presidenelect@pmi-portland.org

Secretary Shancy Saban
secretary@pmi-portland.org

VP Finance Jeff Henderson, PMP
vp_finance@pmi-portland.org

VP at Large Robert Bondaruk, PMP
vp_at_large@pmi-portland.org

VP Marketing Dave Molinari, PMP
vp_marketing@pmi-portland.org

VP Membership Karel Rasovsky, PMP
vp_membership@pmi-portland.org

VP Operations Brad Taylor, PMP
vp_operations@pmi-portland.org

VP Outreach Linda Read, PMP
vp_outreach@pmi-portland.org

VP Professional Development Diane Brady, CSM
vp_prof_devel@pmi-portland.org

VP Programs Christi Loya, MBA, MPM
vp_programs@pmi-portland.org

Sponsor an Event

Becoming a PMI Portland Chapter Sponsor is an excellent way to get in front of our 4000+ audience. Sponsorship gives your company a live presence at PMI Portland Chapter events and a visual presence on the web site and in the newsletter. Contact our Director of Sponsor Programs at sponsor_programs@pmi-portland.org.

Speak at an Event

If you would like to speak at a Chapter Meeting, contact speaker@pmi-portland.org. If you would like to present a workshop, contact workshop@pmi-portland.org.

Submit an Article

Write an article or book review for the newsletter. You can earn PDUs! [Click here](#) for details or contact newsletter@pmi-portland.org.

Quick Links

- [Join PMI and the Portland Chapter](#)
- [Event Calendar](#)
- [Chapter Brochure](#)

- [Chapter Bylaws](#)
- [PMI Portland Editorial Policy](#)
- [Newsletter Archive](#)

Mission

To promote the profession of Project Management by creating a culture and community that facilitates professional growth through education and volunteerism.

Vision

To be the innovative leader in the region for advancing project management, making individuals and organizations more successful. We are a responsive and collaborative center of excellence promoting ethics, quality, knowledge, skills, integrity, and leadership.