

# 10 THINGS gardening has taught me about project management

*Judi Jarosh, PMP*  
judi.jarosh@nmhg.com

who I am and why I'm qualified to talk about this stuff:

- MBA
- PMP
- OSU Certified MG... go Beavs!





# MATERIALS HANDLING GROUP



work



work travel

confused





partners



**KLUTZ**

excuse the mess



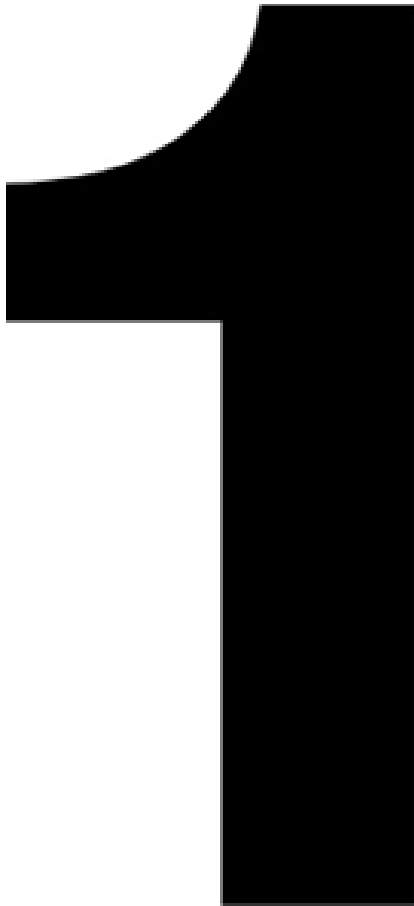


**budget**  
**scope**  
**weeds**  
**timelines**  
**risks**  
**agility**  
**nature**  
**dirt**  
**weather**  
**projects**  
**issues**  
**plans**  
**bugs**



	Gardening 	Projects 
1	Chopsticks	Phones
2	Fast Filigree	Fast SPI
3	Cremaains in a Jar	Dumb ways to Die
4	The "Up" part	The Sponsorship Part
5	Mystery Mound	ADAIR
6	Red Pig	Mantis
7	Starlighters	Dilberters
8	A Dry Rain	People and Projects
9	Jack	Jeff
10	The Big Tomato	The Doubletree

**10**things



**Chopsticks**



**Phones**



What's your "simple"?





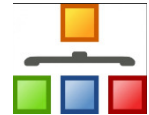
stolen



simple



# 2



Fast Filigree Fast SPI

Stuff happens QUICK





fast



May

July

	Task Name	SP Ind	SPI	S Ir	SPI
1		●	0.92	●	0.48
2		●	0.97	●	0.48
11		●	0.77	●	1
26		●	0.94	●	0.96
27		●	1	●	0.64
31		●	0.96		
40		●	0.94		0
41			0		
42		●	0.94	●	0.31
43		●	0.9	●	0.61
81		●	0.95		0
180		●	1		0
188		●	1		0
189		●	1	●	0.51
190		●	0.98	●	0.75
191		●	1	●	0.44
195		●	1		0
199		●	1		0
208		●	1	●	0.23
212		●	0.1	●	0.36
213		●	1		0
214			0	●	0.42
218		●	1	●	0.27
224		●	1	●	1
234		●	1	●	0.15
241		●	0.95		0
250		●	0.8		0
254		●	0.8		0
261		●	0.95		0

faster





**obsessive**

# 3



**Cremains in a Jar** **Dumb Ways to Die**

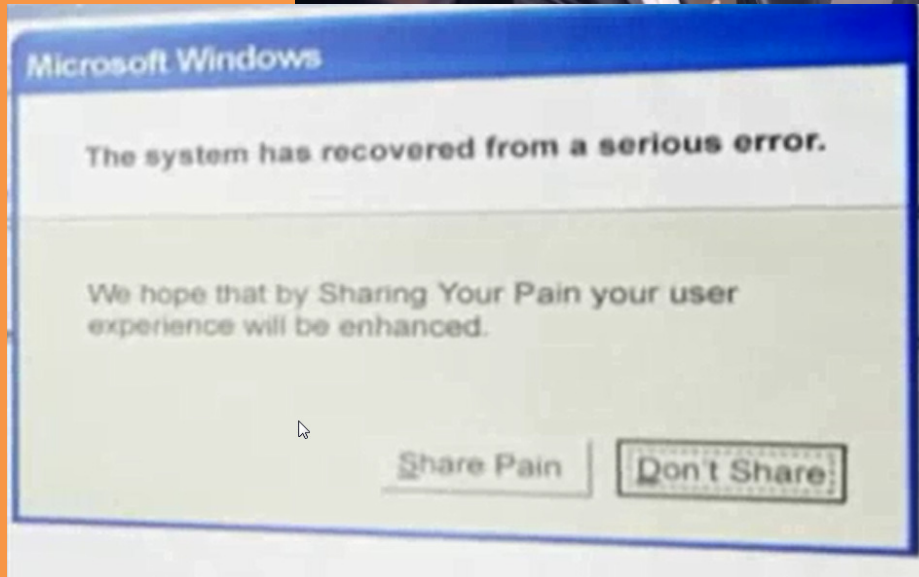
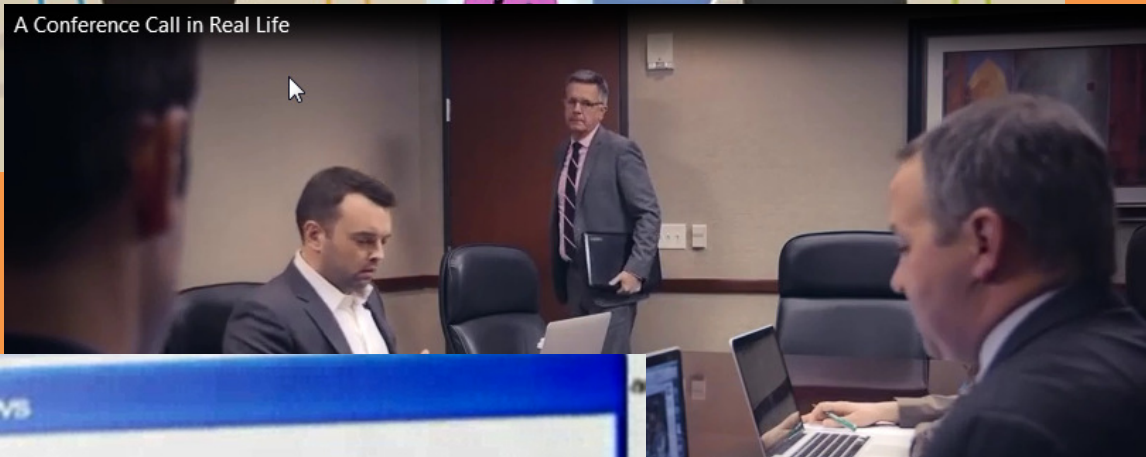
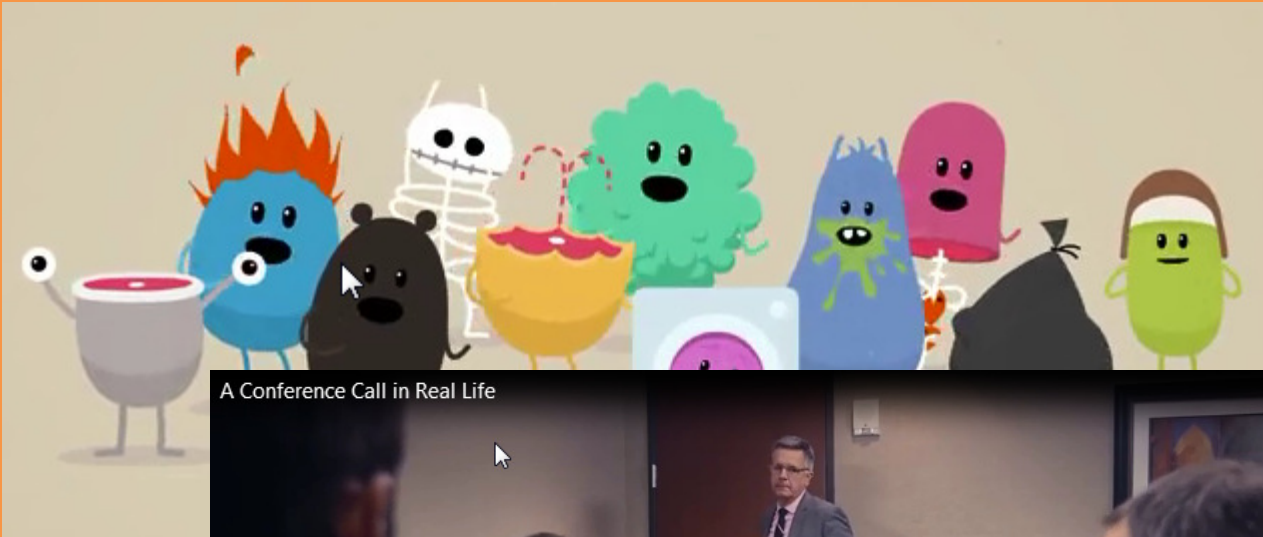
Keep a Stash...It'll Come in Handy





dead

LOL



THE EXPERT



**The "UP Part"**



**The Sponsorship Part**



They may not know



this



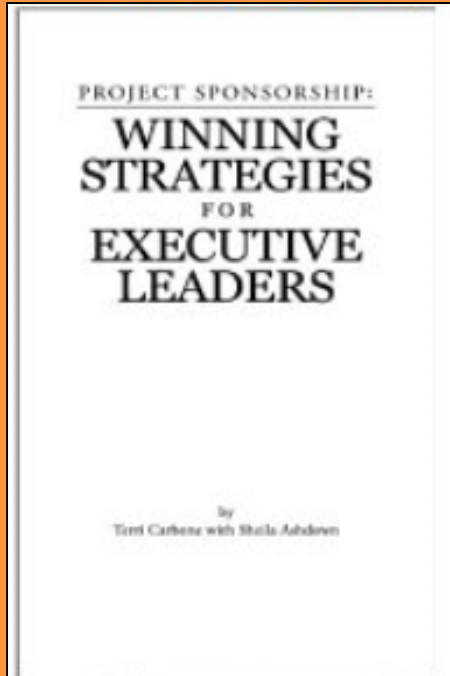
not this



gives you this



this



Terri Carbone and Sheila Ashdown

and this



**Understanding Project Leadership**

Value. Leadership. Service.  
Value. Leadership. Service.  
Value. Leadership. Service.  
Value. Leadership. Service.

**Judi Jarosh, PMP, CISA**  
**IT Project Management & Compliance**

**INACCO MATERIALS HANDLING GROUP**  
**Information Technology**  
Value. Leadership. Service.

The complex block features a collage of images at the top: a close-up of a computer keyboard, a person's hands holding a mobile device, and a person sitting at a computer workstation. Logos for 'HSTER' and 'Yale' are visible in the collage. Below the collage is a red banner with the title 'Understanding Project Leadership'. The main body of the block is white and contains the repeated phrase 'Value. Leadership. Service.' in a light grey font. At the bottom, there is a black box with white text identifying 'Judi Jarosh, PMP, CISA' and 'IT Project Management & Compliance'. To the right of this text is the logo for 'INACCO MATERIALS HANDLING GROUP' and 'Information Technology' with the tagline 'Value. Leadership. Service.'

give you this



# 5



Mystery Mound

ADAIR

It's not what it seems







what the?

# A Disciplined Approach to Issue Resolution (ADAIR)



- How was the Issue Identified?
- What did we expect to happen?
- What actually happened?
- Can you quantify how the actual deviated from the expected?
- Has this Issue come up before?
- Assign the severity level

- What is Involved?
  - e.g. Object, Person, Unit
- Gather existing documentation
- Define terminology
- Where is the problem observed?
  - e.g. Division, Region, Department, DC, Process, System, Report
- Identify upstream and downstream areas that could be impacted
- Identify where the problem is impacting the biz process and/or calendar
- Is the problem a process, system, reporting and/or training issue?
- When did this problem first occur, or when was it discovered? (calendar or process stage)
- With additional analysis, re-quantify how the actual deviated from the expected?
- What is the business impact?
  - e.g. , DSO, Inventory Turns, Net Revenue, etc.
- Re-evaluate the severity level

- How does this Issue differ across \_\_\_\_?
  - e.g. Division, Region, Department, DC, Process, System, Report
- What has changed?
  - e.g. Improved, Modified, Altered, Replaced, Started, Stopped, Substituted, Revised, Deleted, Added, Withdrawn
- What is it about the change that could have caused the problem?
- If the change is the cause, then why doesn't the problem appear elsewhere?

- Identify and develop options (brainstorm)
- Evaluate potential solutions against Root Cause
- Identify Pros and Cons for each viable option
  - e.g. Is it best practice? Have other companies done this?
  - e.g. What upstream and downstream areas would be impacted?
  - e.g. How many resources does it take to fix?
  - e.g. How long will it take to fix?
  - e.g. What are the training requirements?
  - e.g. Is new technology required?
  - e.g. Are there downtime requirements?
  - e.g. What will it take for on going maintenance?
  - e.g. What is the business case?
- Evaluate options using Evaluation Matrix ("Even Swaps" Process, PROACTIVE decision making model)
- What is the measurement of success for the solution?

- Select best option
- Document proposed solution and rationale
- Get approval to proceed

- Provide quality assessment checkpoint on documentation
- Update and log solution in solutions database
- Develop test plans with expected results
- Test solution
- Evaluate the timing of implementation against where we are within the biz process and calendar
- Communicate and educate end users on solution
- Implement solution in "real world"

- What did we expect the results to be?
- What actually happened?
- Identify positives, "Even Better Its"
- Define Next Steps





# 6

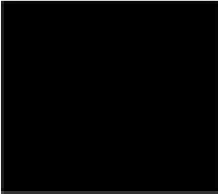


**Red Pig**

**Mantis**



Specialty Tools Can Help





hoe man



@\*?\* \*&\$@!!! bugs



Any questions so far?



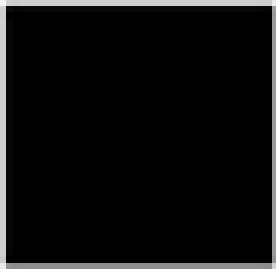
**Starlighters**



**Dilberters**



Have fun... celebrate!





# fruits, flowers, foolery





dork



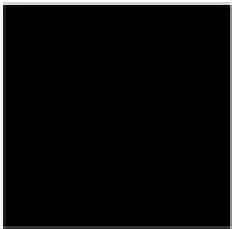
whatever



 **A Dry Rain**  **People & Projects** 



Podcast are helpful...really!



# a dry rain



gardening podcast for the pacific northwest and beyond

A Dry Rain Crew

**Marty Wingate** is an [author](#), garden writer and garden tour guide

**Greg Rabourn** is a [native plant specialist](#) and restoration and gardener. He is co-host of [King County TV's "Yard Talk."](#)

**Willi Galloway** is author of "[Grow, Cook, Eat.](#)" and host of the website '[DigginFood.](#)'

**Steve Scher** is a broadcaster and amateur gardener.

davis garden show  
KPFK show  
wat'cha growin'?  
fresh and local  
farmer fred

## Andy Kaufman, PMP Host of The People and Projects Podcast



### ● Most Popular Episodes

- How to Influence Without Authority, an interview with author Dr. Allan Cohen
- PDUs for PMPs, with guest Cornelius Fichtner, PMP
- How Engaged Are Your Teams? Got Conflict? A conversation with Kenneth W. Thomas, author of "Intrinsic Motivation at Work"
- Leading Teams, with Harvard Professor Dr. J. Richard Hackman
- Get 30 Free PDUs
- The Way We're Working Isn't Working, Part 1
- Engaging Your Employees, with author Brad Federman
- Wired to Care, with author Dev Patnaik
- Rescuing the Problem Project, with author Todd C. Williams, PMP
- Being a Student of PM, with Josh Nankivel

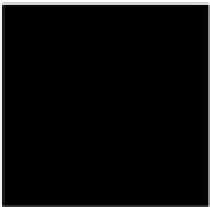


PM  Podcast™

# 9



Seek the wisdom





garden muse





project muse

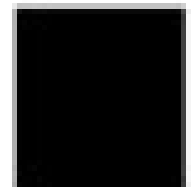
10

The Big Tomato

Doubletree



know where to go







done?

**10**things